

MPG-plus

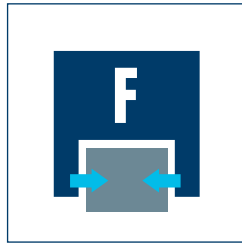
Pneumatic • 2-Finger Parallel Gripper • Gripper for small components



Sizes
25 ... 40



Weight
0.06 kg ... 0.24 kg



Gripping force
38 N ... 175 N

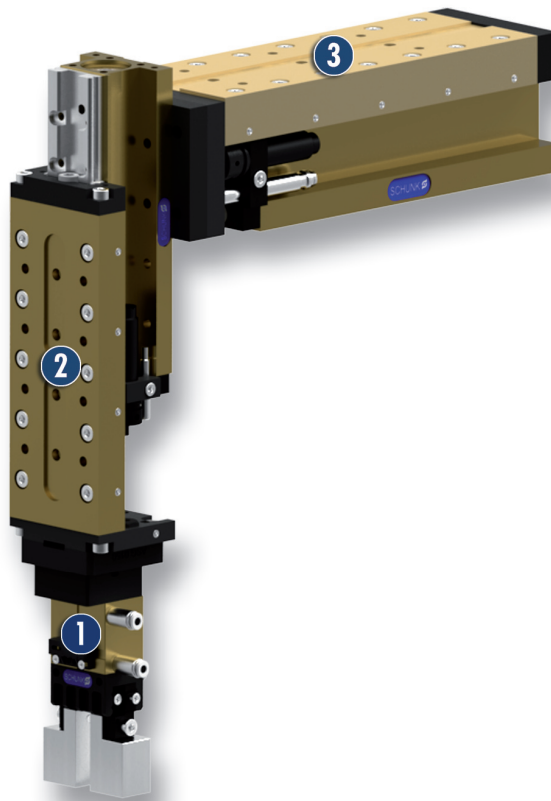


Stroke per finger
3 mm ... 6 mm



Workpiece weight
0.19 kg ... 0.7 kg

Application example



Pneumatically driven, dual-axis pick-and-place machine for small components

- 1** MPG-plus 2-Finger Parallel Gripper with standard finger blanks
- 2** CLM Mini-slide for vertical movement

- 3** CLM Mini-slide for horizontal movement

Gripper for small components

2-Finger Parallel Gripper with smooth running base jaws guided on roller bearings

Field of application

Gripping and moving of small to medium-sized workpieces in clean environments, such as assembly, testing, laboratory and pharmaceutical industry

Your advantages and benefits

Cross roller guide

for precise gripping through base jaw guidance with minimum play

Drive concept oval piston

for maximum gripping forces

Base jaws guided on double roller bearings

ensuring low friction and smooth running actuation

Optimised basic load rating

suitable for using long gripper fingers

Monitoring with electronic magnetic switches

for a maximized process reliability

Mounting from two sides in four screw directions possible

for universal and flexible gripper assembly

Air supply via hose-free direct connection or screw connections

for the flexible supply of compressed air in all automation systems

Compact dimensions

for minimal interfering contours in handling



General note to the series

Principle of function

Wedge-hook kinematics

Housing material

Aluminum alloy, hard-anodized

Base jaw material

Steel

Actuation

pneumatic, with filtered compressed air (10 microns): dry, lubricated or non-lubricated
Pressure medium: Required quality class of compressed air according to DIN ISO 8573-1: 6 4 4

Warranty

24 months (details, general terms and conditions and operation manuals can be downloaded under www.schunk.com)

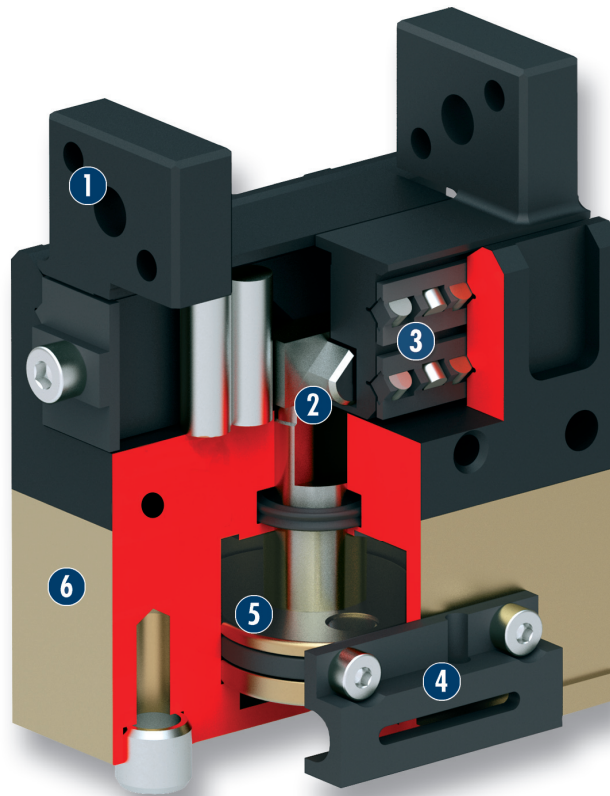
Scope of delivery

Centering sleeves, O-rings for direct connection, assembly and operating manual with manufacturer's declaration

Gripping force maintenance device

with either mechanical gripping force maintenance or SDV-P pressure maintenance valve

Sectional diagram



- 1 Base jaw**
for the connection of workpiece-specific gripper fingers
- 2 Wedge-hook design**
for high power transmission and centric gripping
- 3 Cross roller guide**
precise gripping through base jaw guide with minimum play
- 4 Sensor system**
to monitor two switch-points
- 5 Oval piston drive**
for power generation
- 6 Housing**
weight-optimized through application of hard-anodized, high-strength aluminum alloy

Functional description

The oval piston is moved up or down by means of compressed air. The angled active surfaces of the wedge hook produce a synchronized, parallel jaw motion.

Options and special information

optional adapter plates
allows frontal mounting of the gripper

Accessories

Accessories from SCHUNK – the suitable supplement for maximum functionality, reliability and performance of all automation modules.

Sensor system



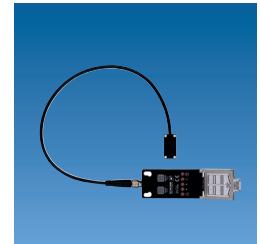
Sensor Distributor



Sensor cables



Flexible Position Sensor



Switching valve



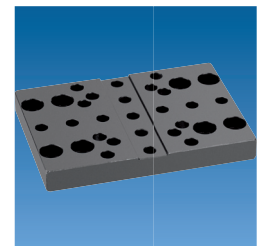
Pressure maintenance valve



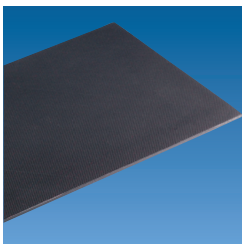
Finger blanks



Adapter plates



Gripper pads



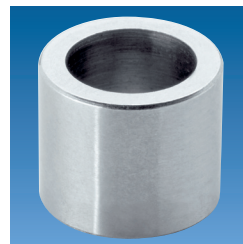
Plastic inserts



Fittings



Centering sleeves



Carbide clamping inserts



① For the exact size of the required accessories, availability of this size and the designation and ID, please refer to the additional views at the end of the size in question. You will find more detailed information on our accessory range in the "Accessories" catalog section.

General note to the series

Gripping force

is the arithmetic total of the gripping force applied to each finger at distance P (see illustration) measured from the upper edge of the gripper.

Finger length

The finger length is measured from the upper edge of the gripper housing in the direction of the main axis.

Repeat accuracy

is defined as the spread of the limit position after 100 consecutive strokes.

Workpiece weight

The recommended workpiece weight is calculated for a force-type connection with a coefficient of friction of 0.1 and a safety factor of 2 against slippage of the workpiece on acceleration due to gravity g. Considerably heavier workpiece weights are permitted with form-fit gripping.

Closing and opening times

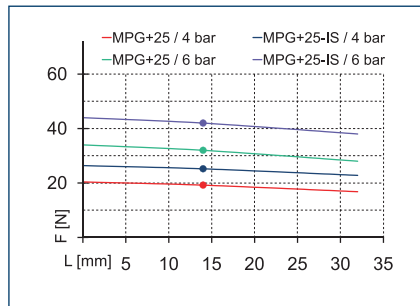
Closing and opening times are purely the times that the base jaws or fingers are in motion. Valve switching times, hose filling times or PLC reaction times are not included in the above times and must be taken into consideration when determining cycle times.

MPG-plus 25

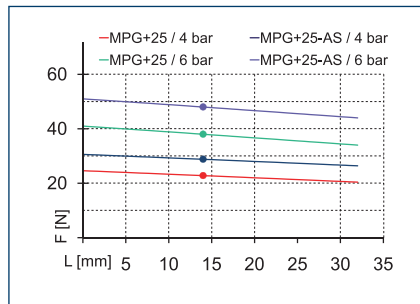
Pneumatic • 2-Finger Parallel Gripper • Gripper for small components



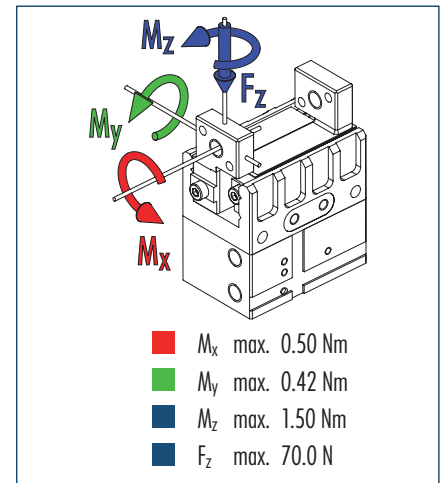
Gripping force, I.D. gripping



Gripping force, O.D. gripping



Finger load

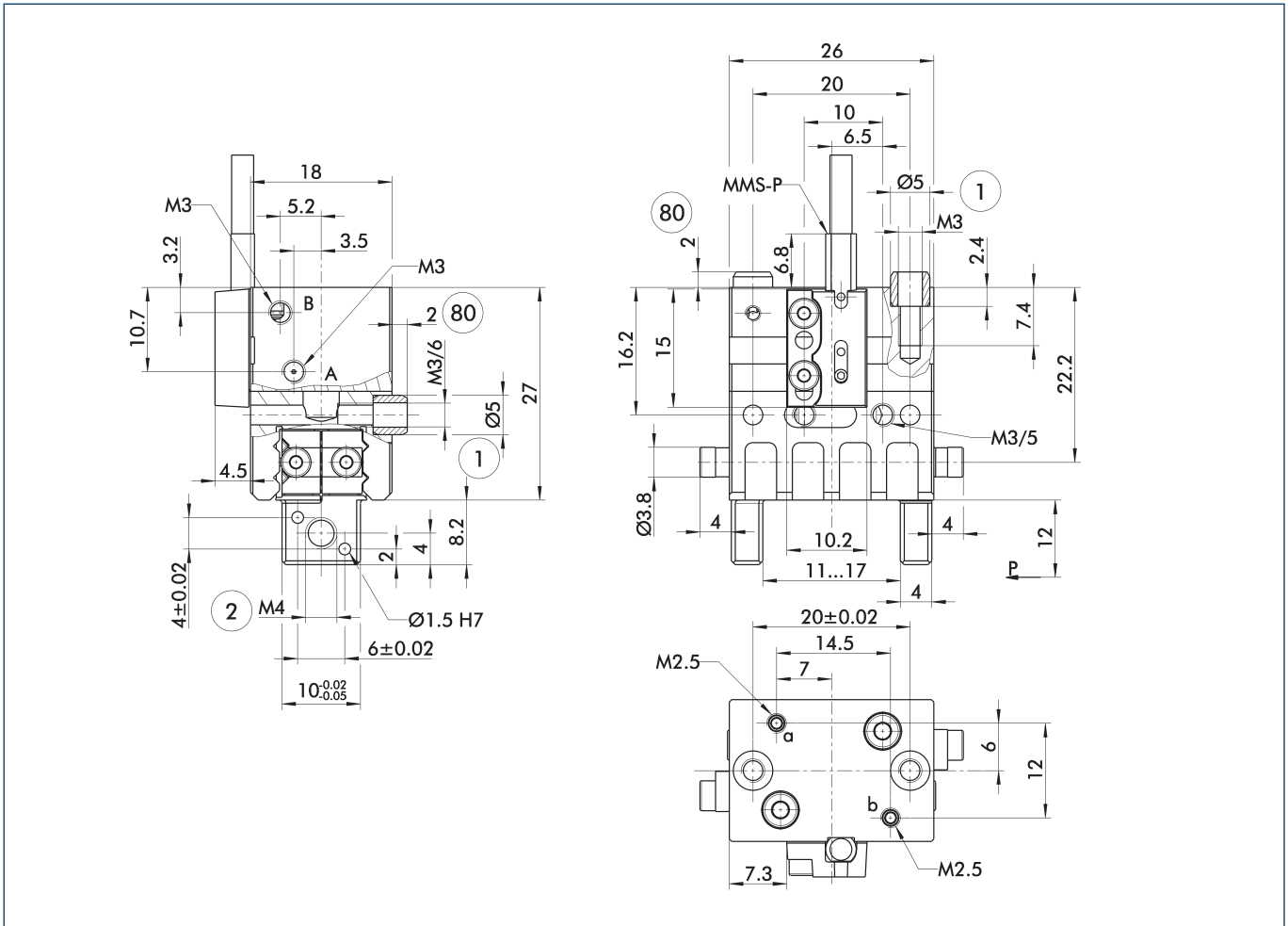


① The indicated moments and forces are static values, apply per base jaw and may occur simultaneously. M_y may arise in addition to the moment generated by the gripping force itself. If the max. permitted finger weight is exceeded, it is imperative to throttle the air pressure so that the jaw movement occurs without any hitting or bouncing. Service life may be reduced.

Technical data

Description		MPG-plus 25	MPG-plus 25-AS	MPG-plus 25-IS
ID		0305501	0305502	0305503
Stroke per finger	[mm]	3	3	3
Closing force	[N]	38	48	
Opening force	[N]	32		42
Min. spring force	[N]		10	10
Weight	[kg]	0.06	0.07	0.07
Recommended workpiece weight	[kg]	0.19	0.19	0.19
Min./max. operating pressure	[bar]	2/8	4/6.5	4/6.5
Nominal operating pressure	[bar]	6	6	6
Closing/opening time	[s]	0.017/0.017	0.017/0.033	0.033/0.017
Closing/opening time only with spring	[s]		0.10	0.10
Max. permitted finger length	[mm]	32	32	32
Max. permitted weight per finger	[kg]	0.02	0.02	0.02
IP class		30	30	30
Min./max. ambient temperature	[°C]	-10/90	-10/90	-10/90
Repeat accuracy	[mm]	0.02	0.02	0.02
Cleanroom class ISO 14644-1		5	5	5

Main view



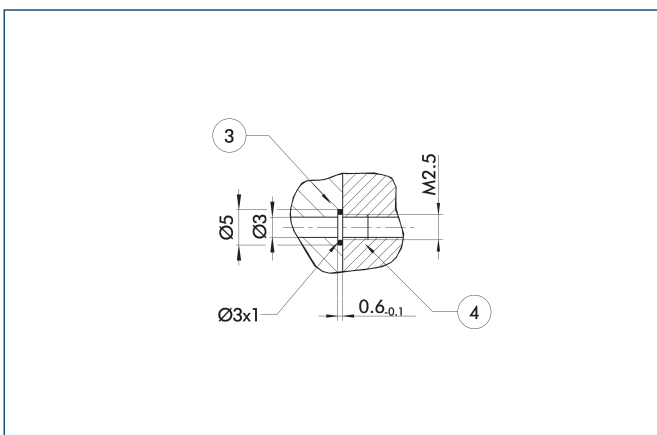
The drawing shows the gripper in the basic version with opened jaws without considering the dimensions of the described options below.

① The SDV-P pressure maintenance valve can also be used for I.D. or O.D. gripping alternatively or in addition to the spring-loaded, mechanical gripping force maintenance device (see „Accessories“ catalog section).

A, a Main/direct connection, gripper opening
 B, b Main/direct connection, gripper closing
 ① Gripper connection
 ② Finger connection

⊘ Depth of the centering sleeve hole in the matching part

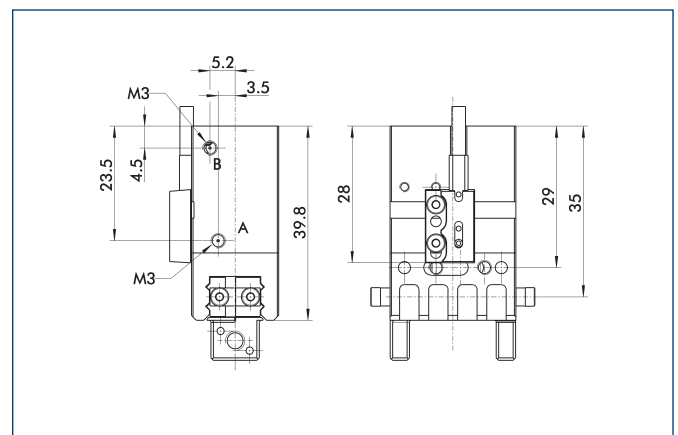
Hose-free direct connection M2.5



③ Adapter
 ④ Gripper

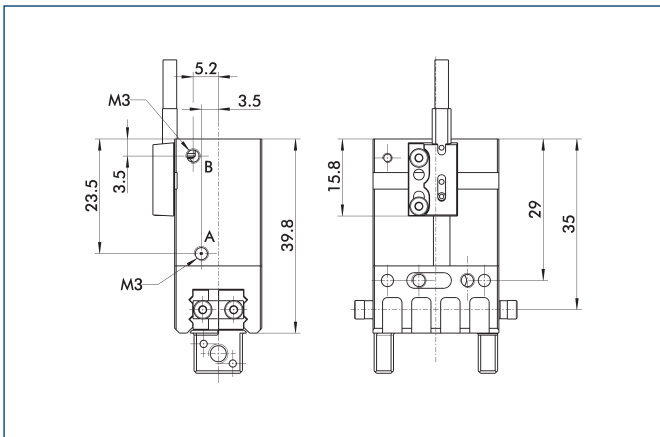
The direct connection is used for supplying compressed air without hoses. Instead, the pressure medium is fed through bore-holes in the mounting plate.

AS gripping force maintenance device



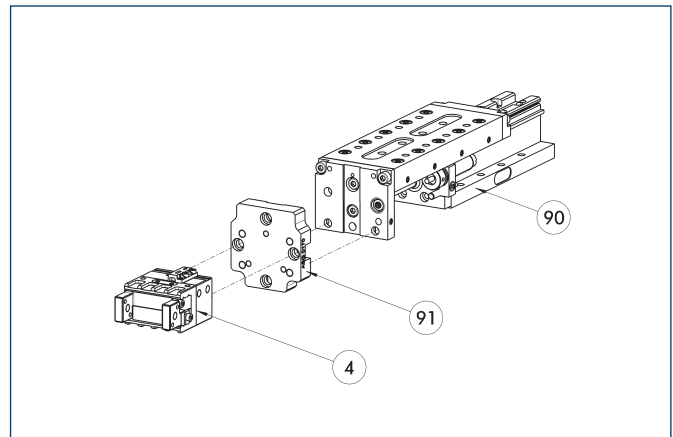
The mechanical gripping force maintenance device ensures a minimum gripping force even in case of pressure drop. This acts as closing force in the AS version, and as opening force in the IS version. In addition, the gripping force maintenance device can also be used for increasing the gripping force or for single-acting gripping.

IS gripping force maintenance device



The mechanical gripping force maintenance device ensures a minimum gripping force even in case of pressure drop. This acts as closing force in the AS version, and as opening force in the IS version. In addition, the gripping force maintenance device can also be used for increasing the gripping force or for single-acting gripping.

Modular Assembly Automation

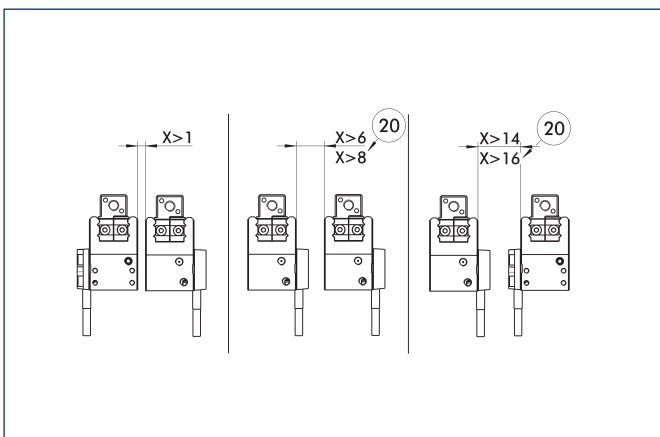


④ Gripper
⑨⑩ CLM

⑨① ASG

This gripper can be combined with the standard linear modules LM, KLM, CLM and ELM of the GEMOTEC modular system. For more information see our main catalog "Modular Assembly Automation".

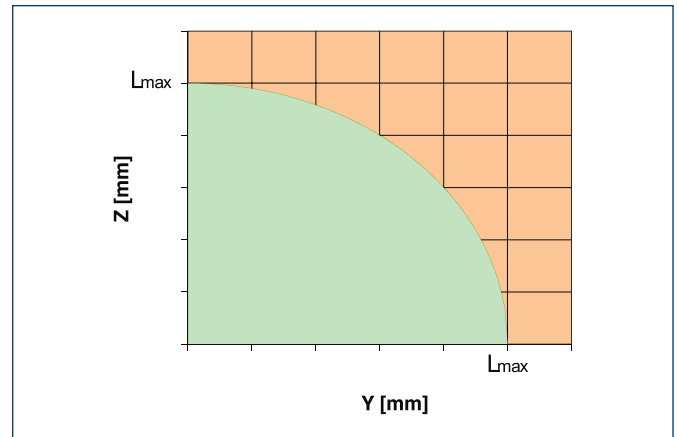
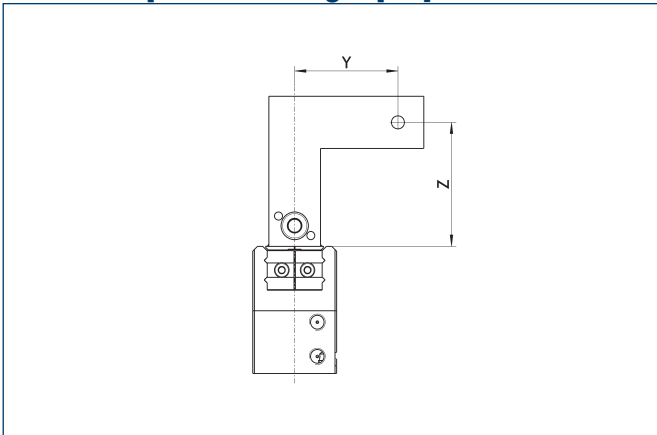
Monitoring and stacked arrangement



②① For AS / IS version

CAUTION: Monitoring is carried out by magnetic switches, and in case of side-by-side assembly of several units, a minimum distance of X mm between the units must be maintained.

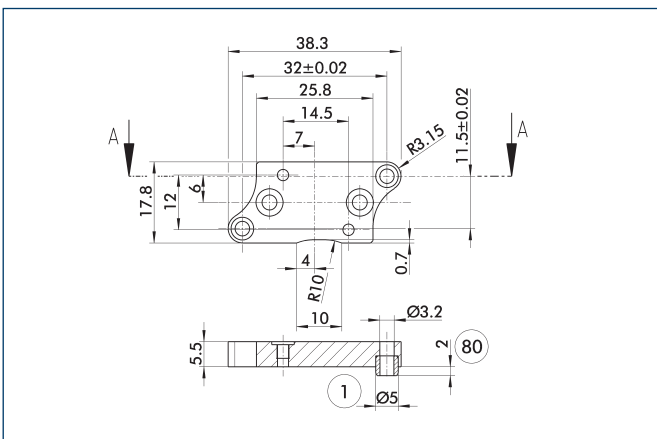
Maximum permitted finger projection



■ Permitted range
■ Inadmissible range

Lmax is equivalent to the maximum permitted finger length, see the chart of technical specifications .

Adapter plate



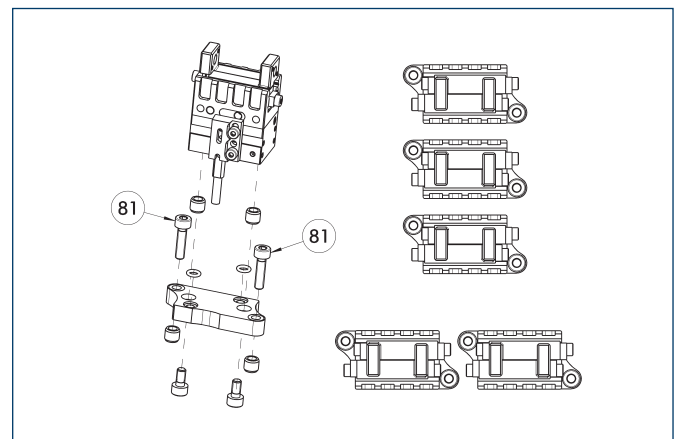
- ① Gripper connection
- ⑧ Depth of the centering sleeve hole in the matching part

The adapter plate includes O-rings for the hose-free air direct connection, additional centric sleeves and screws for mounting at the gripper.

Description	ID
adapter plate	
APL-MPG-plus 25	0305507

① This adapter plate needs to be ordered optionally as an accessory.

Adapter plate



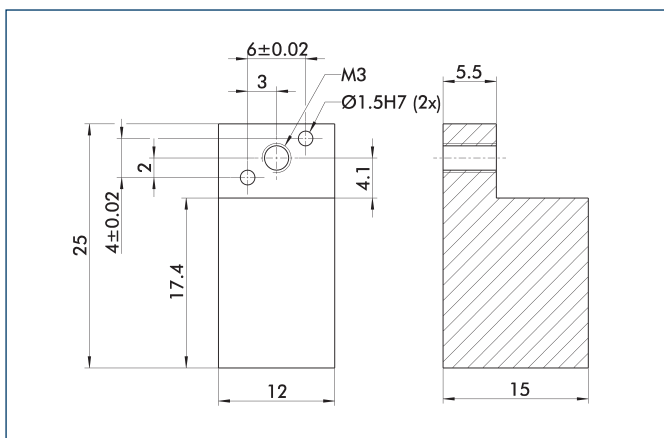
- ⑧ Not subject to the scope of delivery

The adapter plate includes O-rings for the hose-free air direct connection, additional centric sleeves and screws for mounting at the gripper.

Description	ID
adapter plate	
APL-MPG-plus 25	0305507

① This adapter plate needs to be ordered optionally as an accessory.

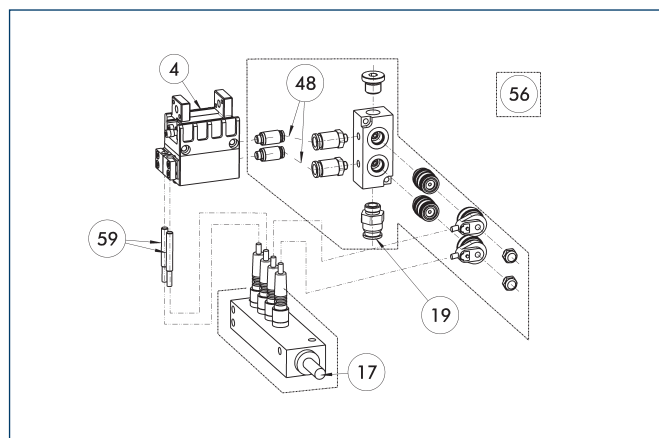
Finger blanks



Finger blanks for customized subsequent machining

Description	ID	Material	Scope of delivery
Finger blanks			
ABR-MPG-plus 25	0340211	Aluminum	2

Attachment valves

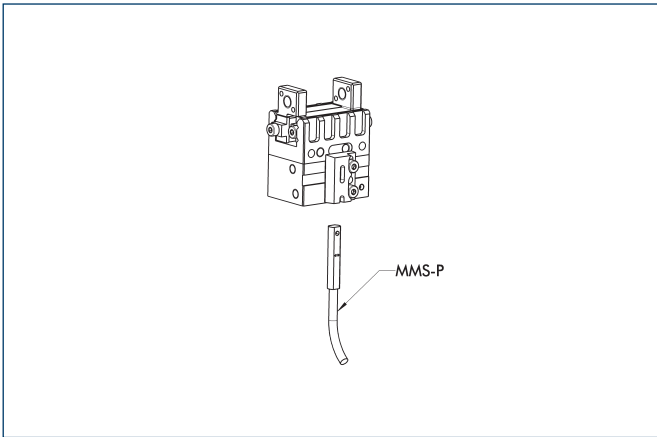


- ④ Gripper
- ⑬ Cable outlet
- ⑰ Air connection
- ④⑧ Hose
- ⑤⑥ Included in delivery
- ⑤⑨ Monitoring „gripping“

Description	ID
Attachment valves	
ABV-MV15-S2-M5	0303375
ABV-MV15-S2-M5-V2-M8	0303376
ABV-MV15-S2-M5-V4-M8	0303377
ABV-MV15-S2-M5-V8-M8	0303378

① For each gripper one attachment valve ABV is required, optional with distributor for sensors and valves. Attachment valves increase the efficiency, reduce the installation work and air consumption and simplify air supply. For details please refer to the "Accessories" catalog section.

Programmable Magnetic Switch

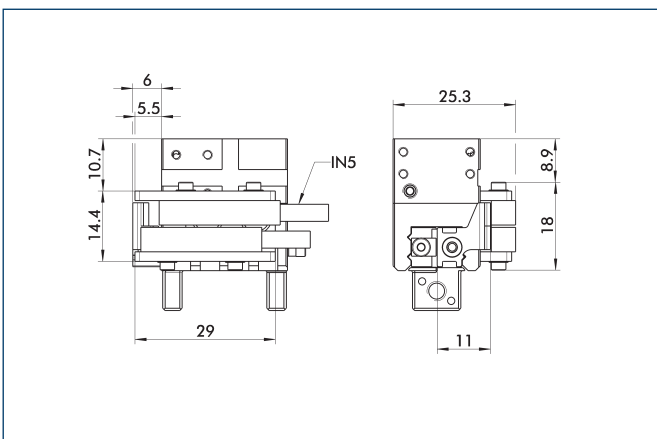


Position monitoring with two programmable positions per sensor. The end position monitoring is mounted in the C-slot.

Description	ID	Recommended product
Programmable Magnetic Switch		
MMS-P 22-S-M8-PNP	0301370	•
MMSK-P 22-S-PNP	0301371	
Connection cables		
KA BG08-L 4P-0500	0307767	
KA BG08-L 4P-1000	0307768	
KA BW08-L 4P-0500	0307765	
KA BW08-L 4P-1000	0307766	

- ① Please note the minimum permitted bending radii for the sensor cables, which are generally 35 mm.
- ① Per gripper one sensor (closer/NO) is required, optionally a cable extension.

Mounting kit for proximity switch IN 5

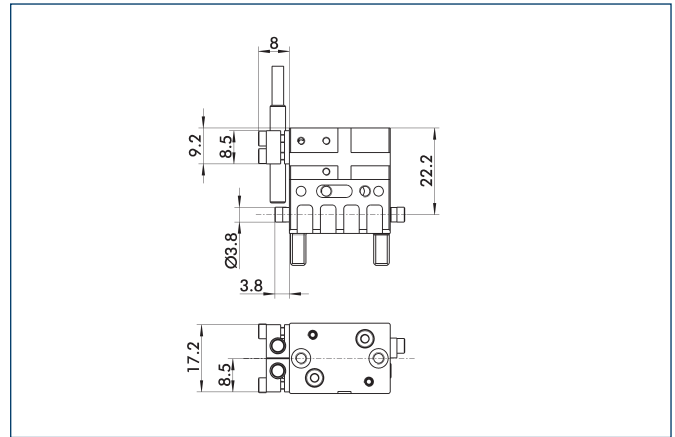


The mounting kit includes a bracket, switch cams and mounting screws. Proximity switches must be ordered separately.

Description	ID
Mounting kit for proximity switch	
AS-IN5-MPG-plus 25	0340150

- ① This mounting kit needs to be ordered optionally as an accessory.

Mounting kit for proximity switch IN 40

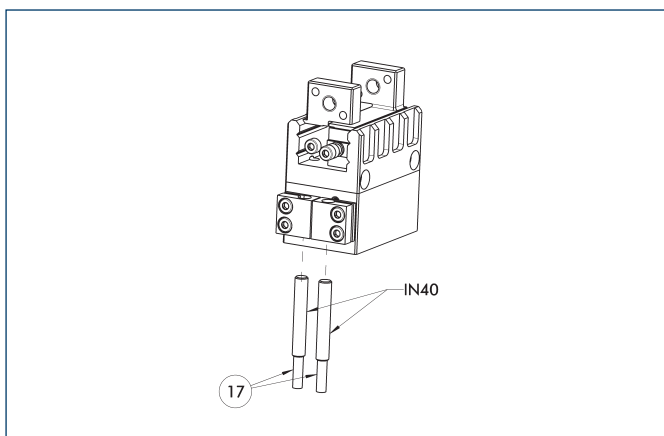


The mounting kit includes a bracket, switch cams and mounting screws. Proximity switches must be ordered separately.

Description	ID
Mounting kit for proximity switch	
AS-IN40-MPG-plus 25	0305505

- ① This mounting kit needs to be ordered optionally as an accessory.

Inductive proximity switches IN 40



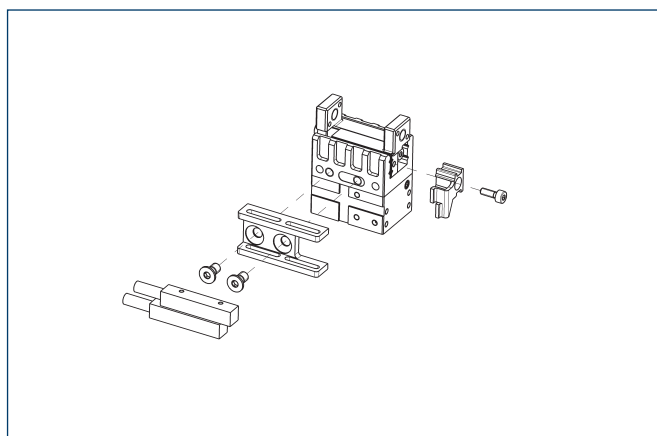
17 Cable outlet

End position monitoring mounted with mounting kit

Description	ID	Recommended product
Mounting kit for proximity switch		
AS-IN40-MPG-plus 25	0305505	
Inductive proximity switches		
IN 40-S-M8	0301474	•
IN 40-S-M12	0301574	
INK 40-S	0301555	
IN 40-S-M5-PNP	0301491	
IN 40-S-M5-NPN	0301492	

① Please note the minimum permitted bending radii for the sensor cables, which are generally 35 mm.

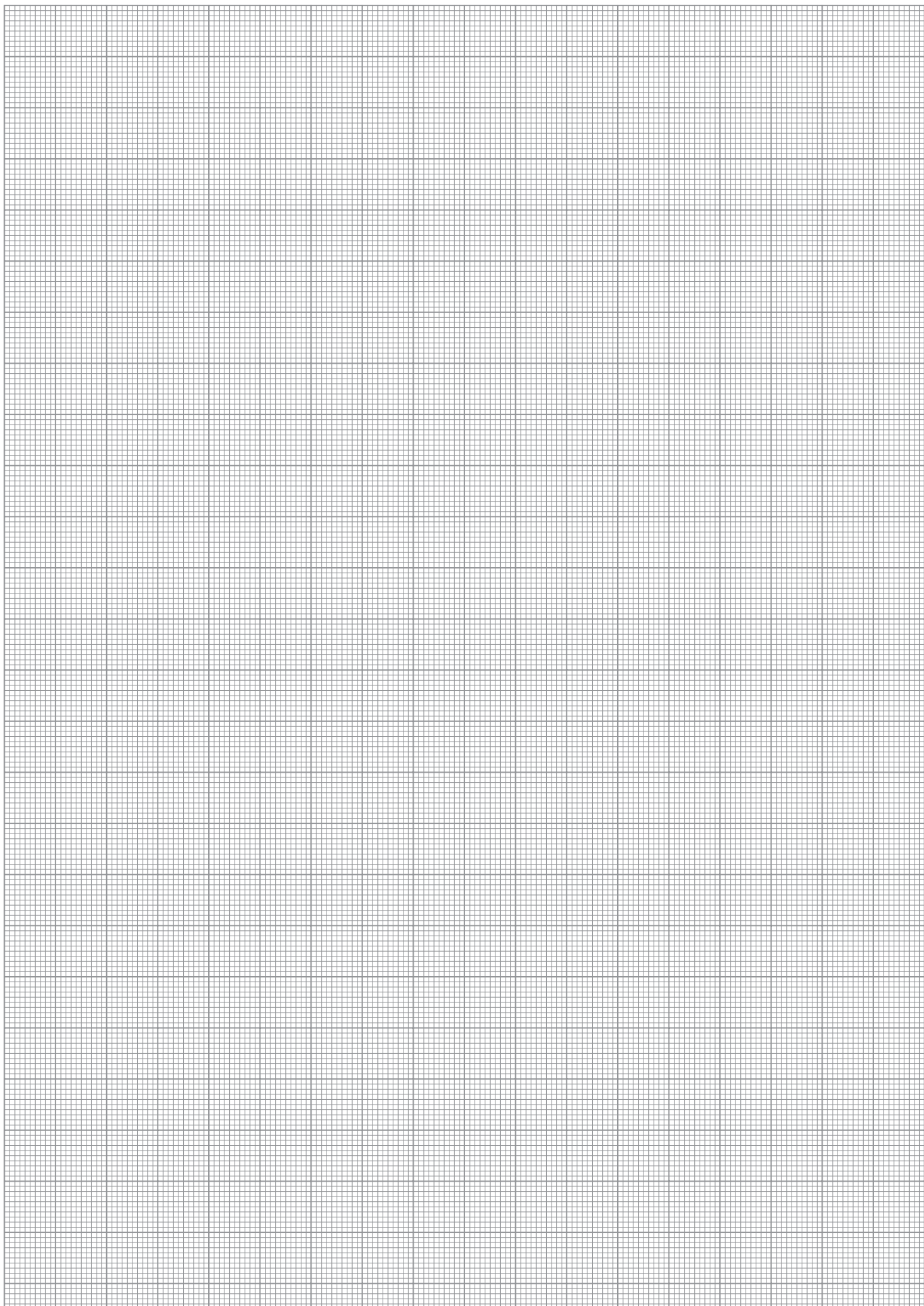
Inductive proximity switches IN 5



End position monitoring mounted with mounting kit

Description	ID	Recommended product
Mounting kit for proximity switch		
AS-IN5-MPG-plus 25	0340150	
Inductive proximity switches		
IN 5-S-M8	0301469	•
IN 5-S-M12	0301569	

① Please note the minimum permitted bending radii for the sensor cables, which are generally 35 mm.

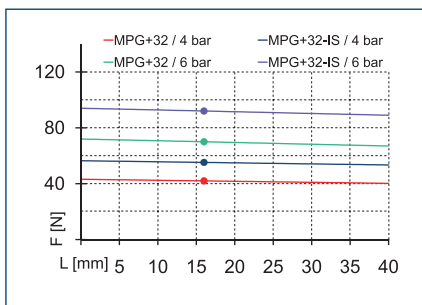


MPG-plus 32

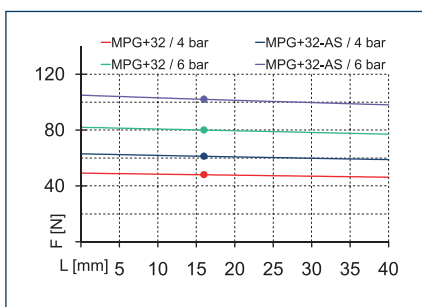
Pneumatic • 2-Finger Parallel Gripper • Gripper for small components



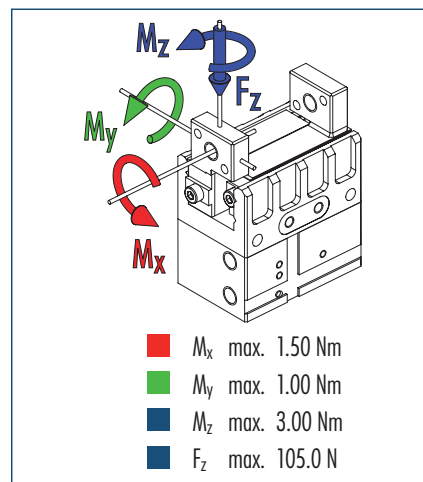
Gripping force, I.D. gripping



Gripping force, O.D. gripping



Finger load

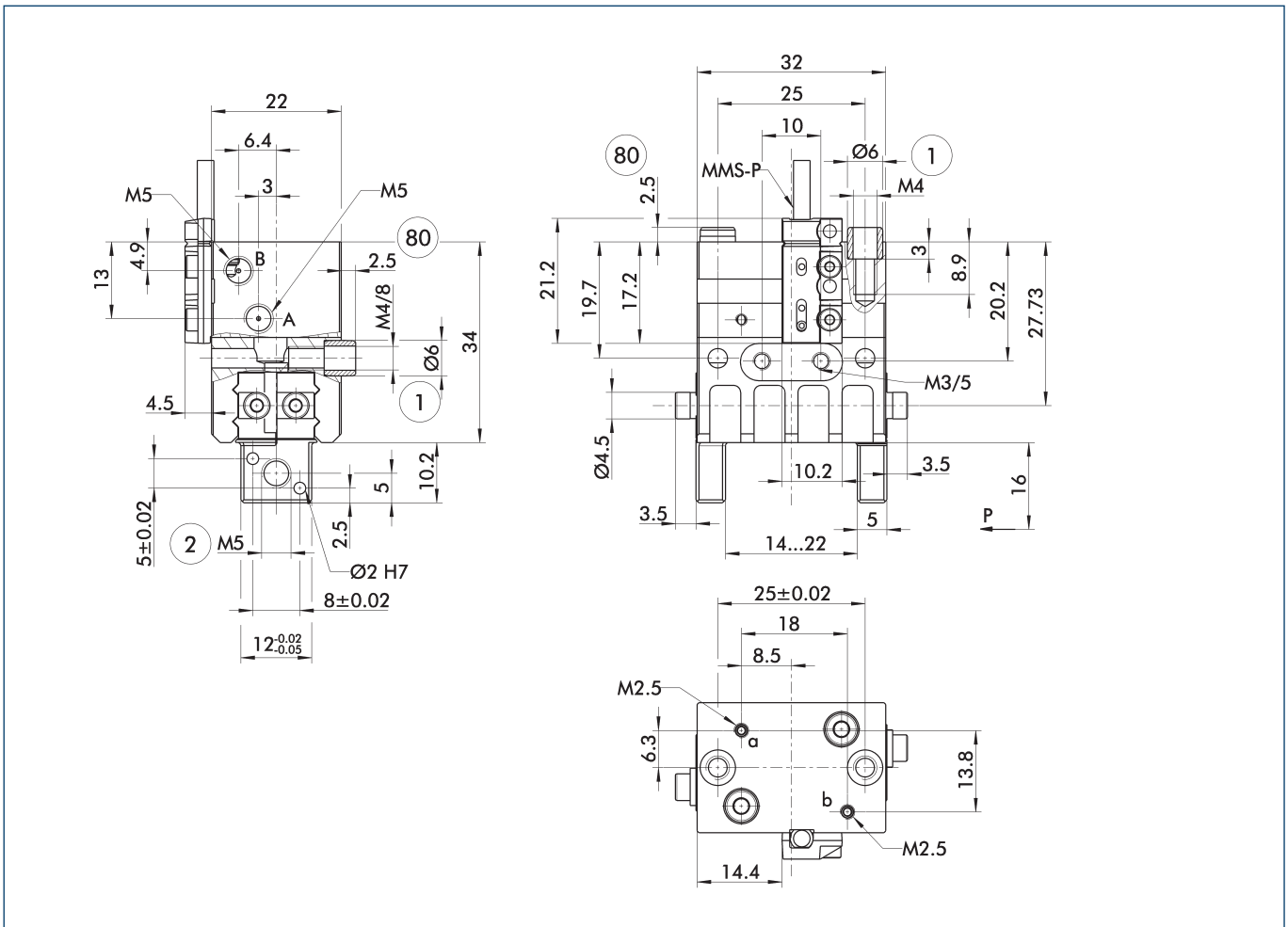


ⓘ The indicated moments and forces are static values, apply per base jaw and may occur simultaneously. M_y may arise in addition to the moment generated by the gripping force itself. If the max. permitted finger weight is exceeded, it is imperative to throttle the air pressure so that the jaw movement occurs without any hitting or bouncing. Service life may be reduced.

Technical data

Description	MPG-plus 32	MPG-plus 32-AS	MPG-plus 32-IS
ID	0305511	0305512	0305513
Stroke per finger [mm]	4	4	4
Closing force [N]	80	102	
Opening force [N]	70		92
Min. spring force [N]		22	22
Weight [kg]	0.1	0.13	0.13
Recommended workpiece weight [kg]	0.43	0.43	0.43
Min./max. operating pressure [bar]	2/8	4/6.5	4/6.5
Nominal operating pressure [bar]	6	6	6
Closing/opening time [s]	0.02/0.02	0.03/0.045	0.045/0.03
Closing/opening time only with spring [s]		0.20	0.20
Max. permitted finger length [mm]	40	40	40
Max. permitted weight per finger [kg]	0.04	0.04	0.04
IP class	30	30	30
Min./max. ambient temperature [°C]	-10/90	-10/90	-10/90
Repeat accuracy [mm]	0.02	0.02	0.02
Cleanroom class ISO 14644-1	5	5	5

Main view

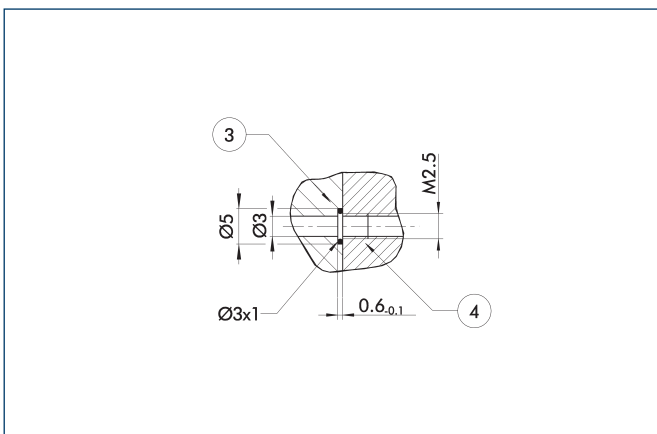


① The SDV-P pressure maintenance valve can also be used for I.D. or O.D. gripping alternatively or in addition to the spring-loaded, mechanical gripping force maintenance device (see „Accessories“ catalog section).

A, a Main/direct connection, gripper opening
 B, b Main/direct connection, gripper closing
 ① Gripper connection
 ② Finger connection

⊗ Depth of the centering sleeve hole in the matching part

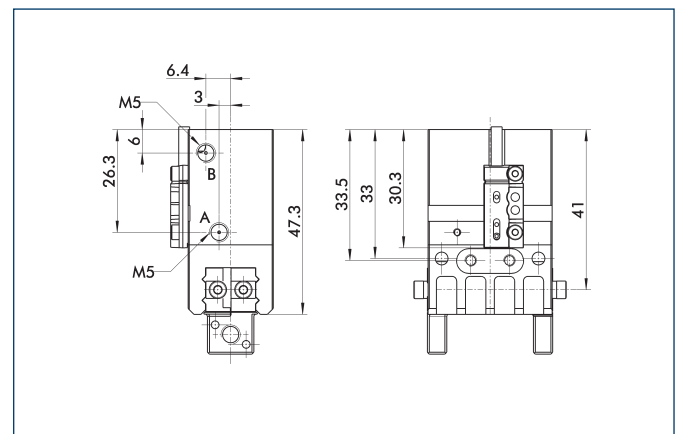
Hose-free direct connection M2.5



③ Adapter
 ④ Gripper

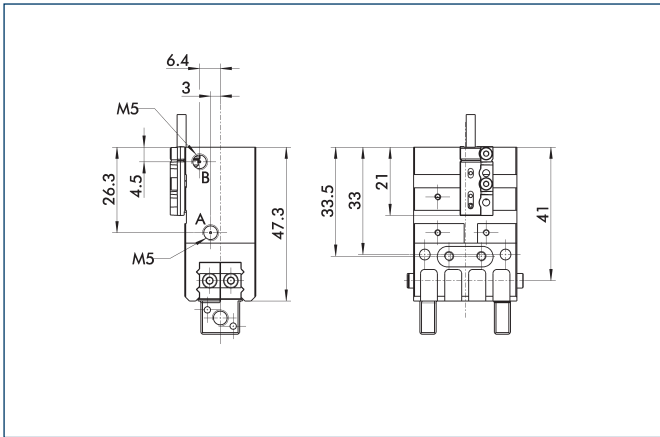
The direct connection is used for supplying compressed air without hoses. Instead, the pressure medium is fed through bore-holes in the mounting plate.

AS gripping force maintenance device



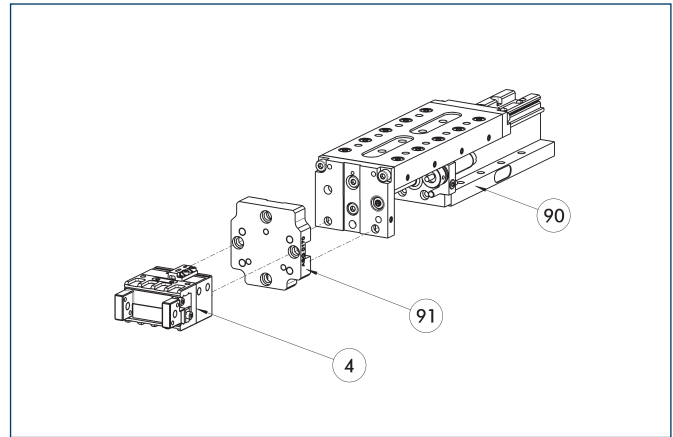
The mechanical gripping force maintenance device ensures a minimum gripping force even in case of pressure drop. This acts as closing force in the AS version, and as opening force in the IS version. In addition, the gripping force maintenance device can also be used for increasing the gripping force or for single-acting gripping.

IS gripping force maintenance device



The mechanical gripping force maintenance device ensures a minimum gripping force even in case of pressure drop. This acts as closing force in the AS version, and as opening force in the IS version. In addition, the gripping force maintenance device can also be used for increasing the gripping force or for single-acting gripping.

Modular Assembly Automation

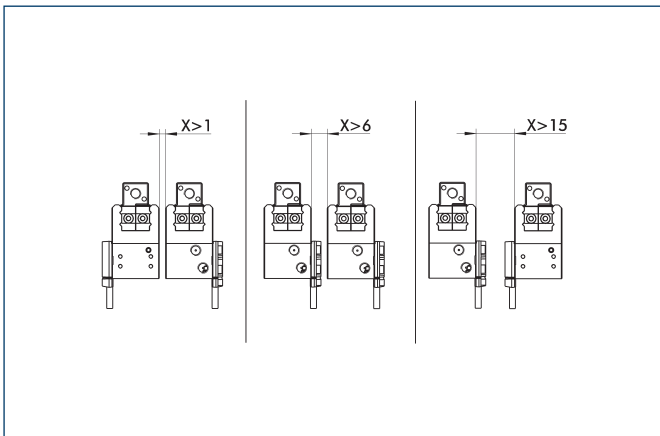


④ Gripper
⑨① CLM

⑨① ASG

This gripper can be combined with the standard linear modules LM, KLM, CLM and ELM of the GEMOTEC modular system. For more information see our main catalog "Modular Assembly Automation".

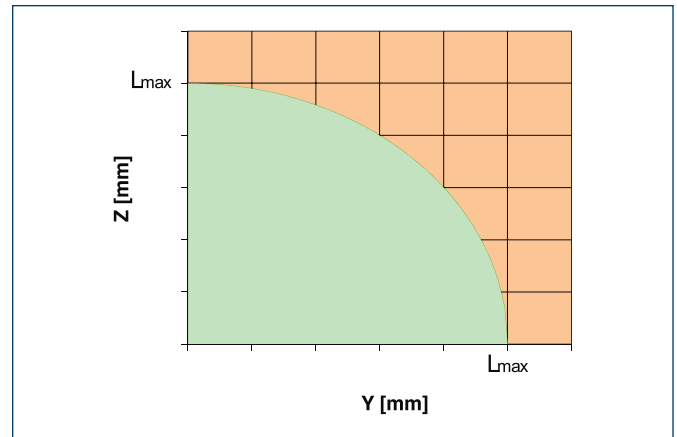
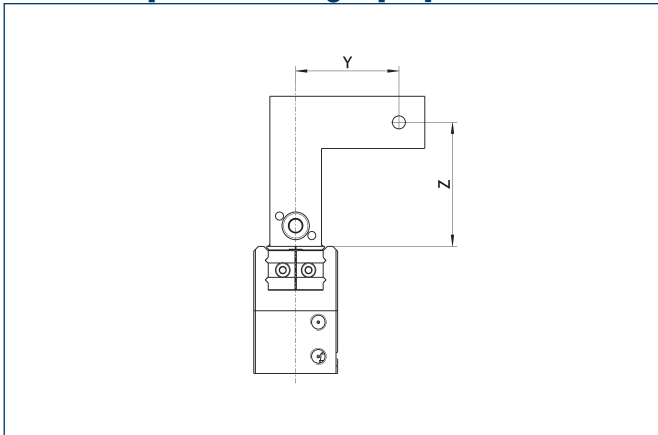
Monitoring and stacked arrangement



⑳ For AS / IS version

CAUTION: Monitoring is carried out by magnetic switches, and in case of side-by-side assembly of several units, a minimum distance of X mm between the units must be maintained.

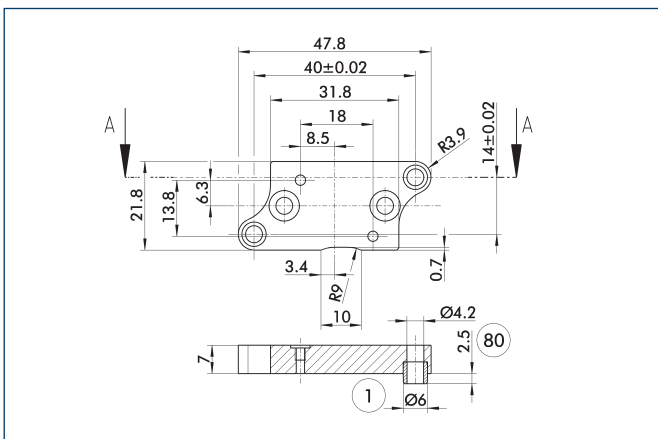
Maximum permitted finger projection



■ Permitted range
■ Inadmissible range

Lmax is equivalent to the maximum permitted finger length, see the chart of technical specifications .

Adapter plate



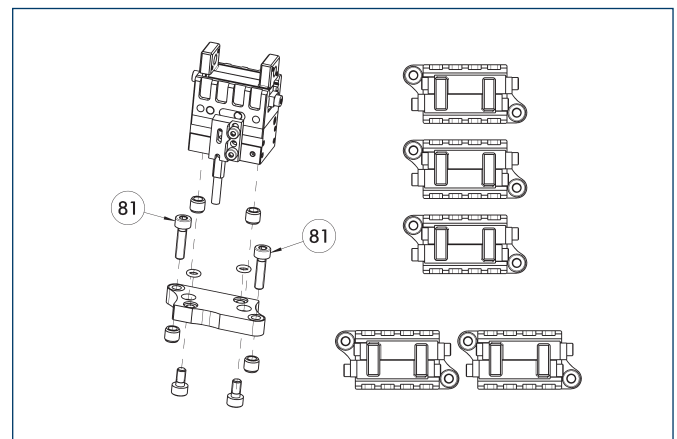
- ① Gripper connection
- ⑧ Depth of the centering sleeve hole in the matching part

The adapter plate includes O-rings for the hose-free air direct connection, additional centric sleeves and screws for mounting at the gripper.

Description	ID
adapter plate	
APL-MPG-plus 32	0305517

① This adapter plate needs to be ordered optionally as an accessory.

Adapter plate



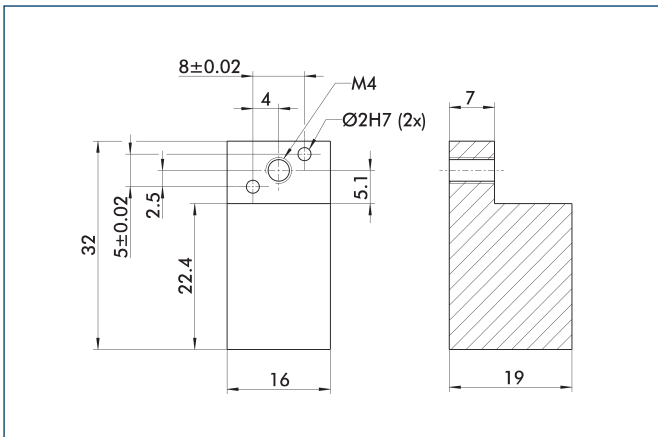
- ⑧ Not subject to the scope of delivery

The adapter plate includes O-rings for the hose-free air direct connection, additional centric sleeves and screws for mounting at the gripper.

Description	ID
adapter plate	
APL-MPG-plus 32	0305517

① This adapter plate needs to be ordered optionally as an accessory.

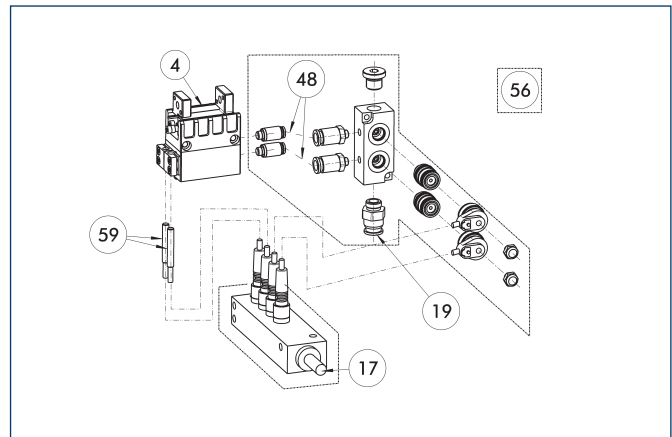
Finger blanks



Finger blanks for customized subsequent machining

Description	ID	Material	Scope of delivery
Finger blanks			
ABR-MPG-plus 32	0340212	Aluminum	2

Attachment valves

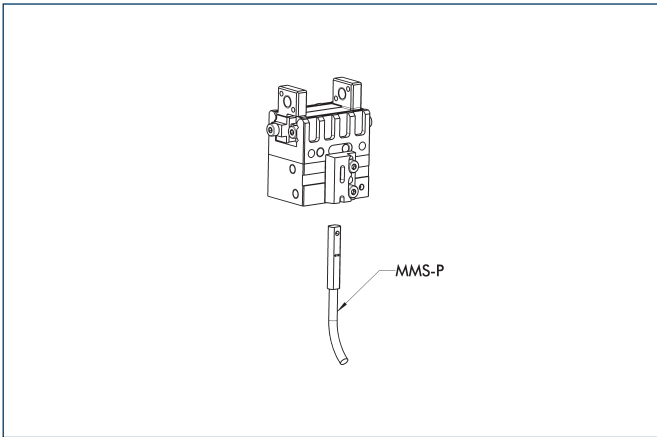


- ④ Gripper
- ⑬ Cable outlet
- ⑰ Air connection
- ⑳ Hose
- ⑤⑥ Included in delivery
- ⑤⑨ Monitoring „gripping“

Description	ID
Attachment valves	
ABV-MV15-S2-M5	0303375
ABV-MV15-S2-M5-V2-M8	0303376
ABV-MV15-S2-M5-V4-M8	0303377
ABV-MV15-S2-M5-V8-M8	0303378

- ① For each gripper one attachment valve ABV is required, optional with distributor for sensors and valves. Attachment valves increase the efficiency, reduce the installation work and air consumption and simplify air supply. For details please refer to the “Accessories” catalog section.

Programmable Magnetic Switch

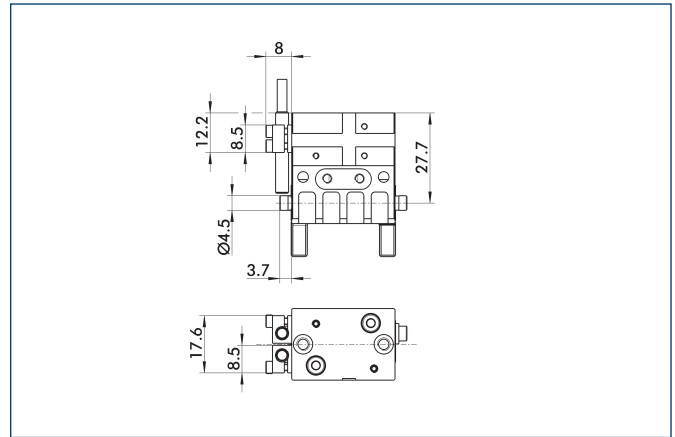


Position monitoring with two programmable positions per sensor. The end position monitoring is mounted in the C-slot.

Description	ID	Recommended product
Programmable Magnetic Switch		
MMS-P 22-S-M8-PNP	0301370	•
MMSK-P 22-S-PNP	0301371	
Connection cables		
KA BG08-L 4P-0500	0307767	
KA BG08-L 4P-1000	0307768	
KA BW08-L 4P-0500	0307765	
KA BW08-L 4P-1000	0307766	

- ① Please note the minimum permitted bending radii for the sensor cables, which are generally 35 mm.
- ① Per gripper one sensor (closer/NO) is required, optionally a cable extension.

Mounting kit for proximity switch IN 40

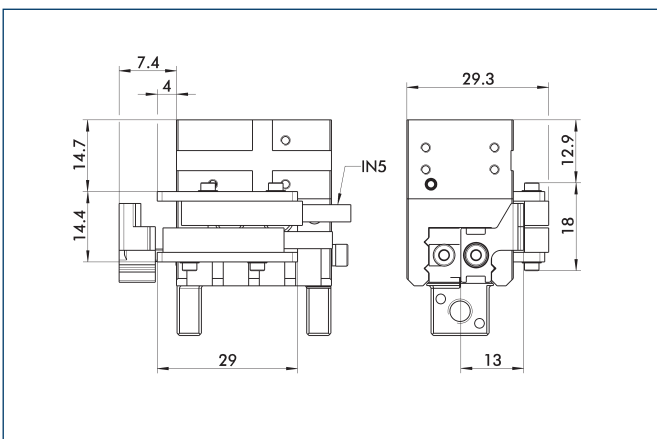


The mounting kit includes a bracket, switch cams and mounting screws. Proximity switches must be ordered separately.

Description	ID
Mounting kit for proximity switch	
AS-IN40-MPG-plus 32	0305515

- ① This mounting kit needs to be ordered optionally as an accessory.

Mounting kit for proximity switch IN 5

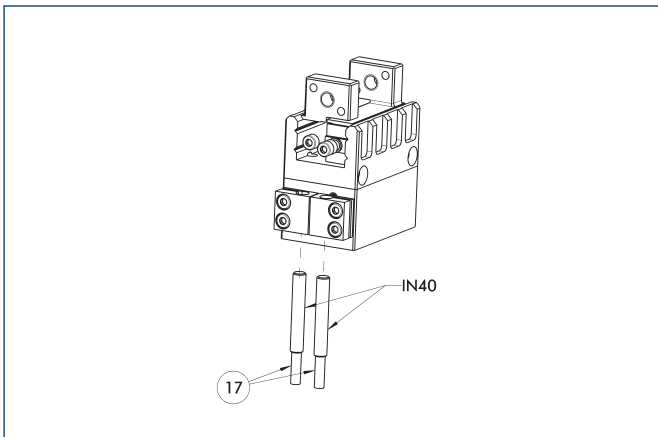


The mounting kit includes a bracket, switch cams and mounting screws. Proximity switches must be ordered separately.

Description	ID
Mounting kit for proximity switch	
AS-IN5-MPG-plus 32	0340151

- ① This mounting kit needs to be ordered optionally as an accessory.

Inductive proximity switches IN 40



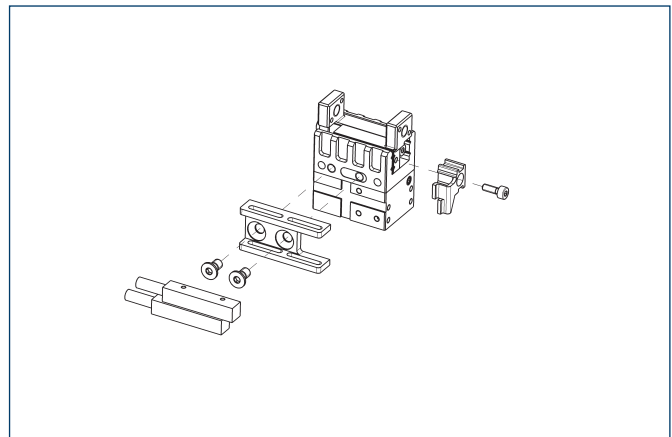
17 Cable outlet

End position monitoring mounted with mounting kit

Description	ID	Recommended product
Mounting kit for proximity switch		
AS-IN40-MPG-plus 32	0305515	
Inductive proximity switches		
IN 40-S-M8	0301474	•
IN 40-S-M12	0301574	
INK 40-S	0301555	
IN 40-S-M5-PNP	0301491	
IN 40-S-M5-NPN	0301492	

① Please note the minimum permitted bending radii for the sensor cables, which are generally 35 mm.

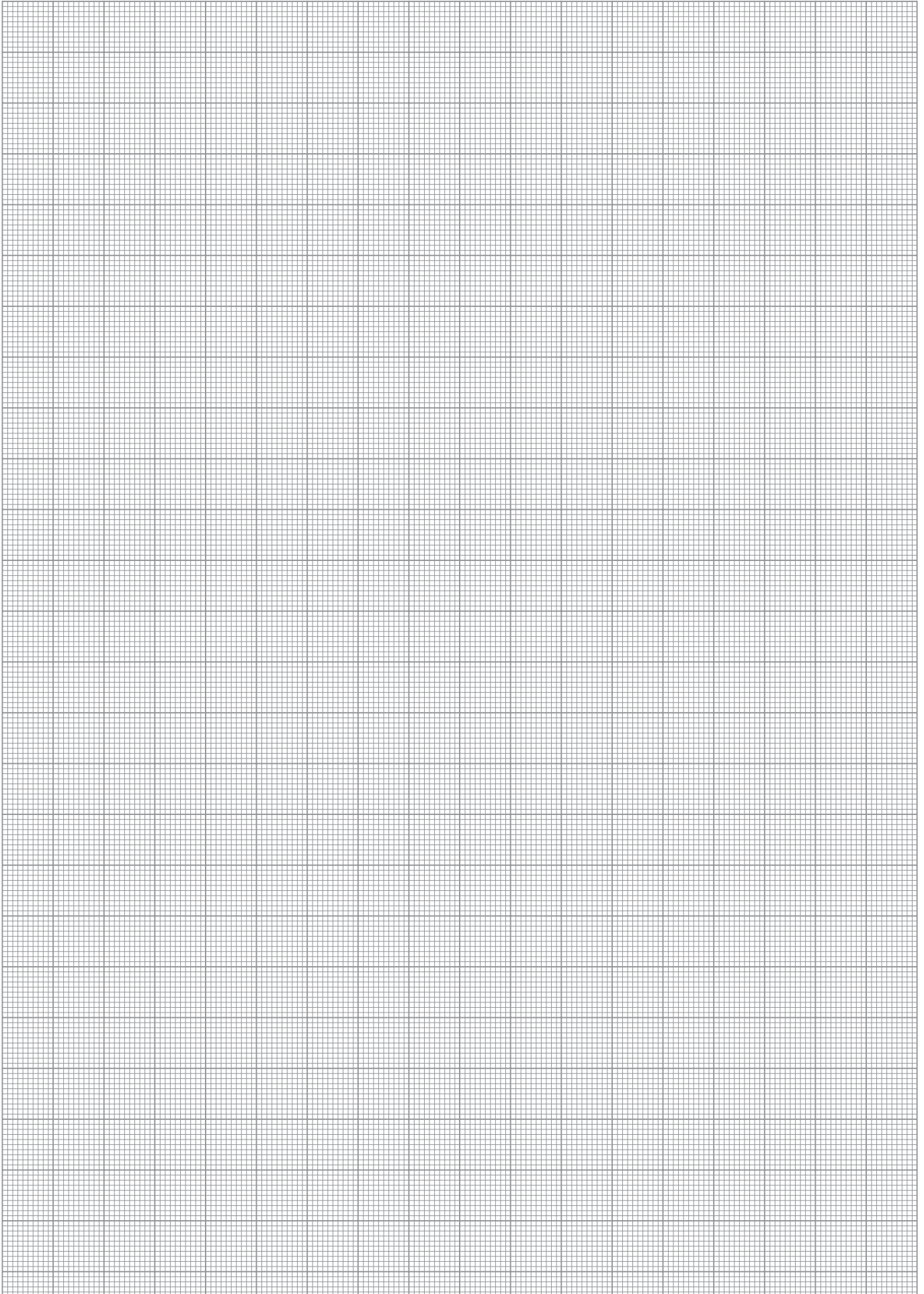
Inductive proximity switches IN 5



End position monitoring mounted with mounting kit

Description	ID	Recommended product
Mounting kit for proximity switch		
AS-IN5-MPG-plus 32	0340151	
Inductive proximity switches		
IN 5-S-M8	0301469	•
IN 5-S-M12	0301569	

① Please note the minimum permitted bending radii for the sensor cables, which are generally 35 mm.

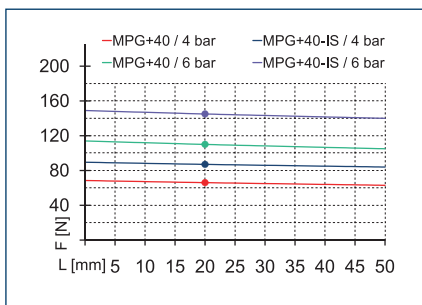


MPG-plus 40

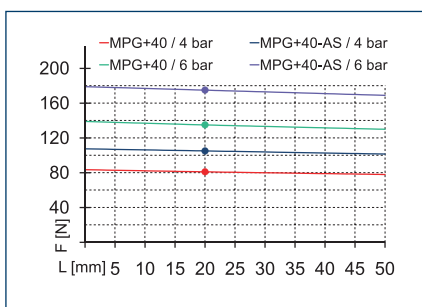
Pneumatic • 2-Finger Parallel Gripper • Gripper for small components



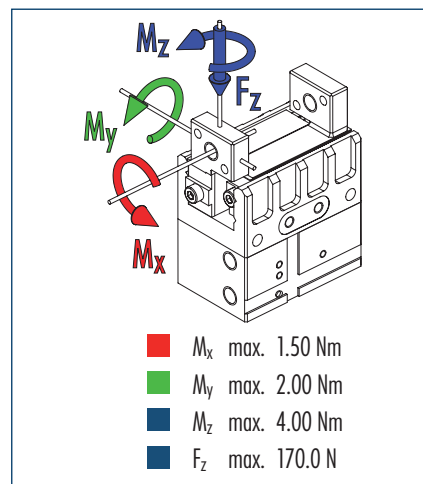
Gripping force, I.D. gripping



Gripping force, O.D. gripping



Finger load

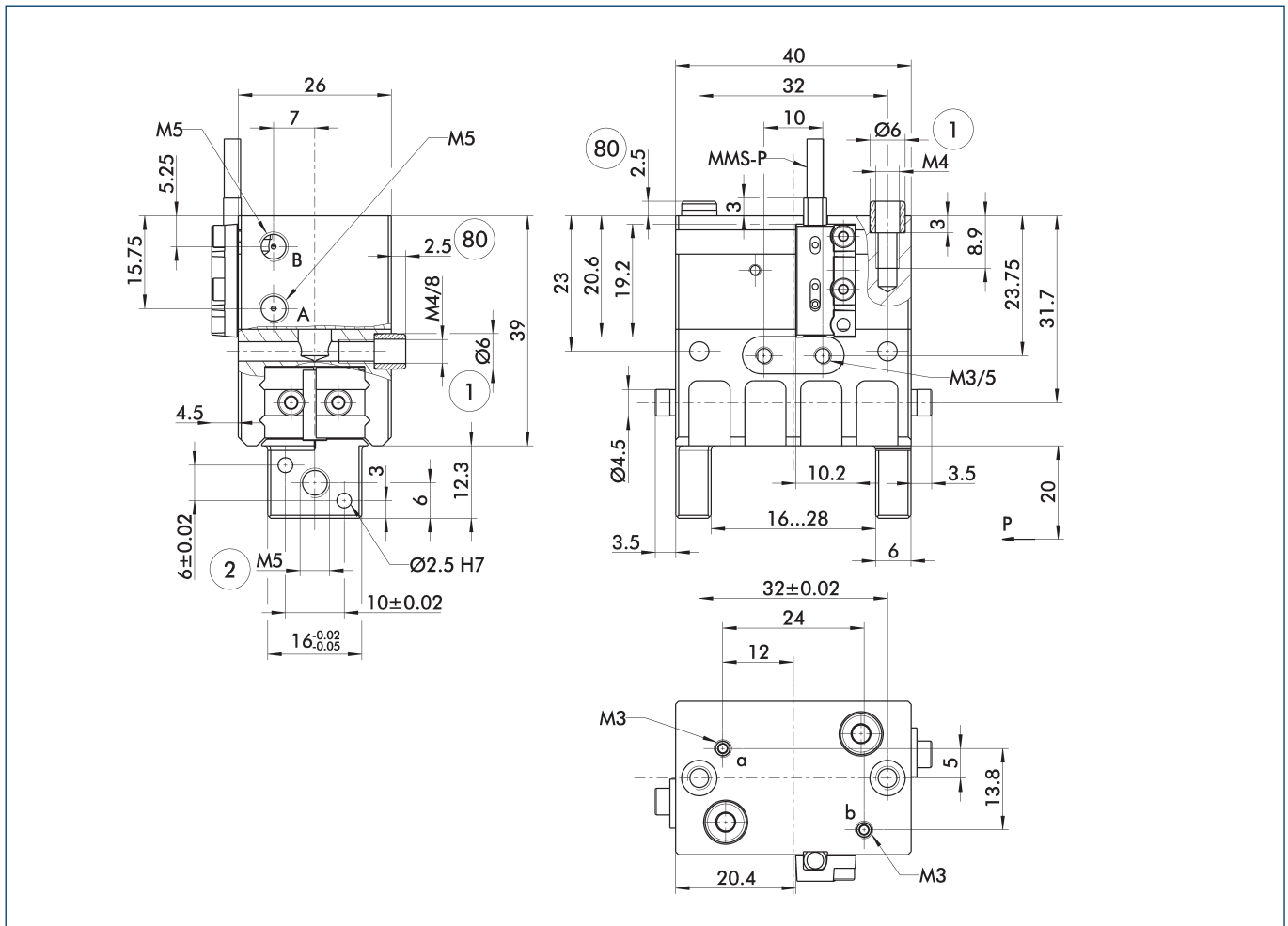


① The indicated moments and forces are static values, apply per base jaw and may occur simultaneously. M_y may arise in addition to the moment generated by the gripping force itself. If the max. permitted finger weight is exceeded, it is imperative to throttle the air pressure so that the jaw movement occurs without any hitting or bouncing. Service life may be reduced.

Technical data

Description		MPG-plus 40	MPG-plus 40-AS	MPG-plus 40-IS
ID		0305521	0305522	0305523
Stroke per finger	[mm]	6	6	6
Closing force	[N]	135	175	
Opening force	[N]	110		145
Min. spring force	[N]		40	40
Weight	[kg]	0.18	0.24	0.24
Recommended workpiece weight	[kg]	0.7	0.7	0.7
Min./max. operating pressure	[bar]	2/8	4/6.5	4/6.5
Nominal operating pressure	[bar]	6	6	6
Closing/opening time	[s]	0.04/0.04	0.045/0.075	0.075/0.045
Closing/opening time only with spring	[s]		0.20	0.20
Max. permitted finger length	[mm]	50	50	50
Max. permitted weight per finger	[kg]	0.08	0.08	0.08
IP class		30	30	30
Min./max. ambient temperature	[°C]	-10/90	-10/90	-10/90
Repeat accuracy	[mm]	0.02	0.02	0.02
Cleanroom class ISO 14644-1		5	5	5

Main view

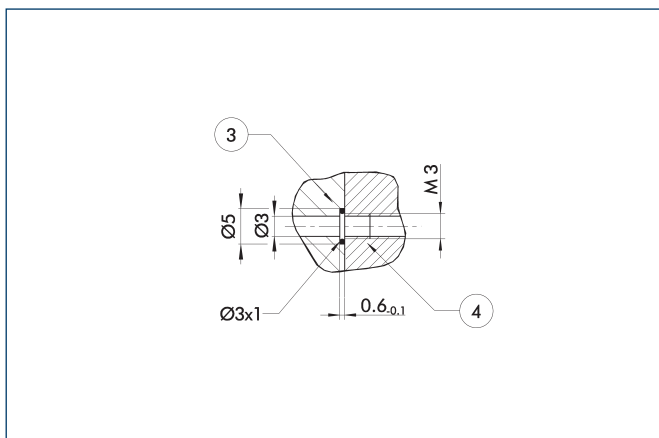


① The SDV-P pressure maintenance valve can also be used for I.D. or O.D. gripping alternatively or in addition to the spring-loaded, mechanical gripping force maintenance device (see „Accessories“ catalog section).

- A, a Main/direct connection, gripper opening
- B, b Main/direct connection, gripper closing
- ① Gripper connection
- ② Finger connection

⑧ Depth of the centering sleeve hole in the matching part

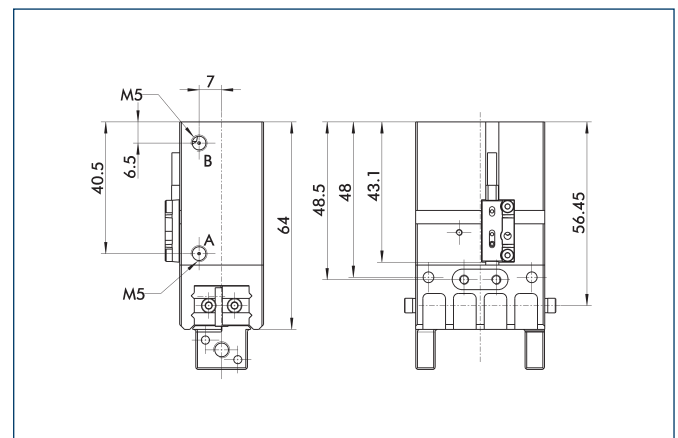
Hose-free direct connection M3



- ③ Adapter
- ④ Gripper

The direct connection is used for supplying compressed air without hoses. Instead, the pressure medium is fed through bore-holes in the mounting plate.

AS gripping force maintenance device

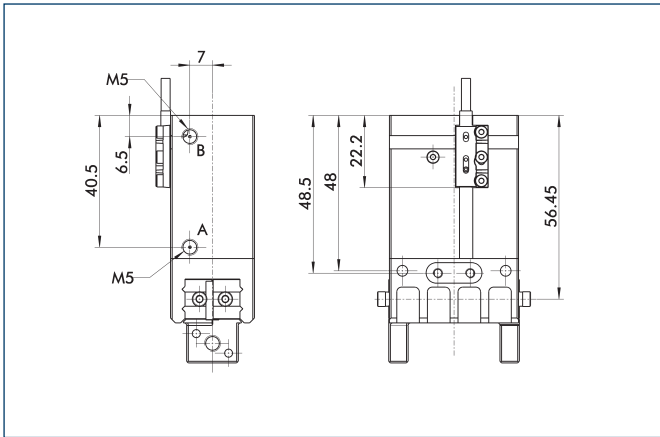


The mechanical gripping force maintenance device ensures a minimum gripping force even in case of pressure drop. This acts as closing force in the AS version, and as opening force in the IS version. In addition, the gripping force maintenance device can also be used for increasing the gripping force or for single-acting gripping.

MPG-plus 40

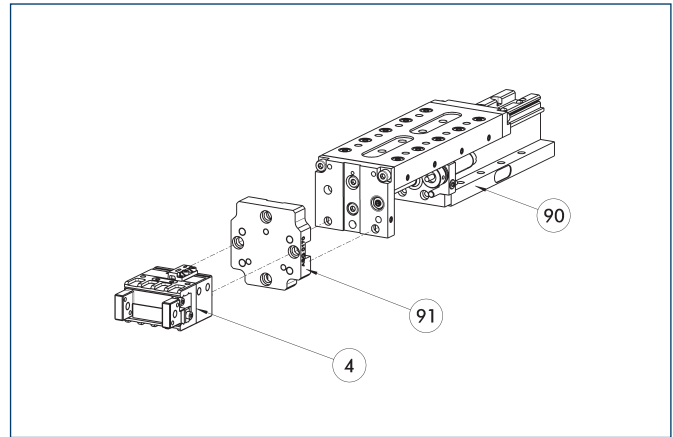
Pneumatic • 2-Finger Parallel Gripper • Gripper for small components

IS gripping force maintenance device



The mechanical gripping force maintenance device ensures a minimum gripping force even in case of pressure drop. This acts as closing force in the AS version, and as opening force in the IS version. In addition, the gripping force maintenance device can also be used for increasing the gripping force or for single-acting gripping.

Modular Assembly Automation

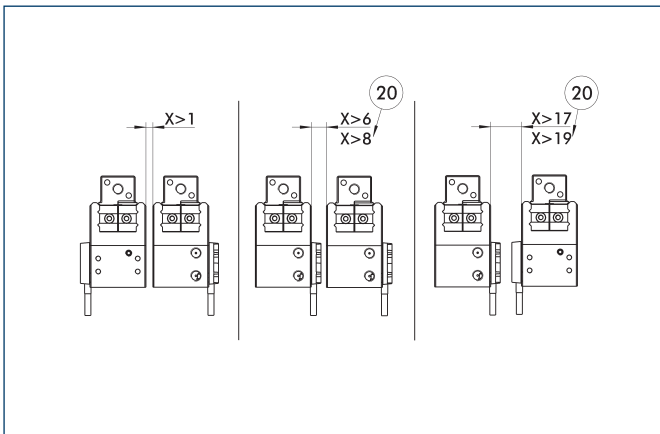


④ Gripper
⑨⑩ CLM

⑨① ASG

This gripper can be combined with the standard linear modules LM, KLM, CLM and ELM of the GEMOTEC modular system. For more information see our main catalog "Modular Assembly Automation".

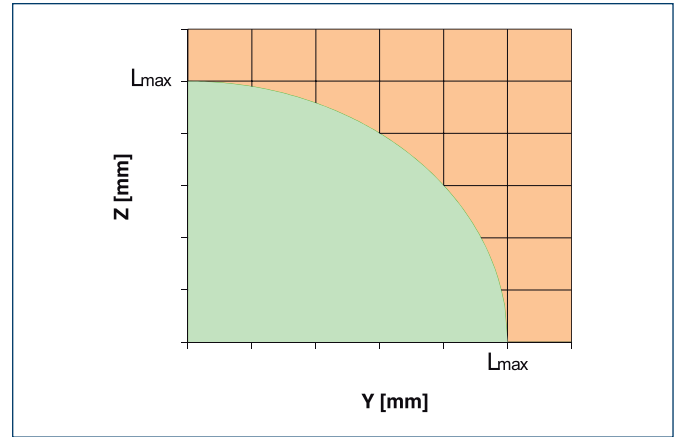
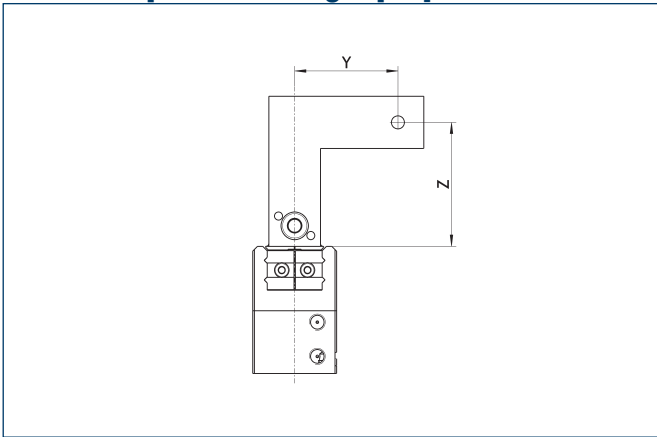
Monitoring and stacked arrangement



②① For AS / IS version

CAUTION: Monitoring is carried out by magnetic switches, and in case of side-by-side assembly of several units, a minimum distance of X mm between the units must be maintained.

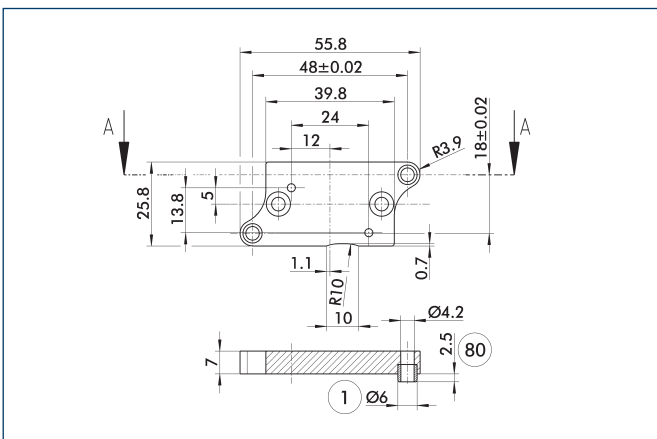
Maximum permitted finger projection



■ Permitted range
■ Inadmissible range

L_{max} is equivalent to the maximum permitted finger length, see the chart of technical specifications .

Adapter plate



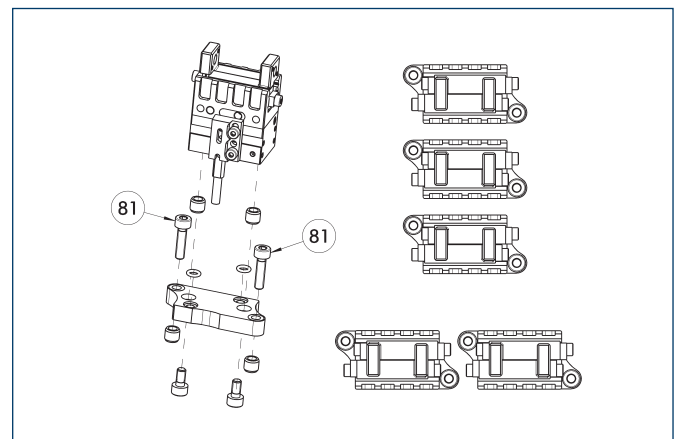
- ① Gripper connection
- ⑧ Depth of the centering sleeve hole in the matching part

The adapter plate includes O-rings for the hose-free air direct connection, additional centric sleeves and screws for mounting at the gripper.

Description	ID
adapter plate	
APL-MPG-plus 40	0305527

① This adapter plate needs to be ordered optionally as an accessory.

Adapter plate



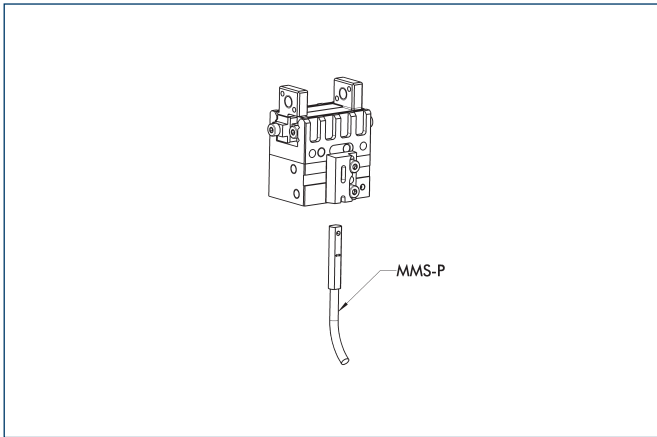
- ⑧ Not subject to the scope of delivery

The adapter plate includes O-rings for the hose-free air direct connection, additional centric sleeves and screws for mounting at the gripper.

Description	ID
adapter plate	
APL-MPG-plus 40	0305527

① This adapter plate needs to be ordered optionally as an accessory.

Programmable Magnetic Switch

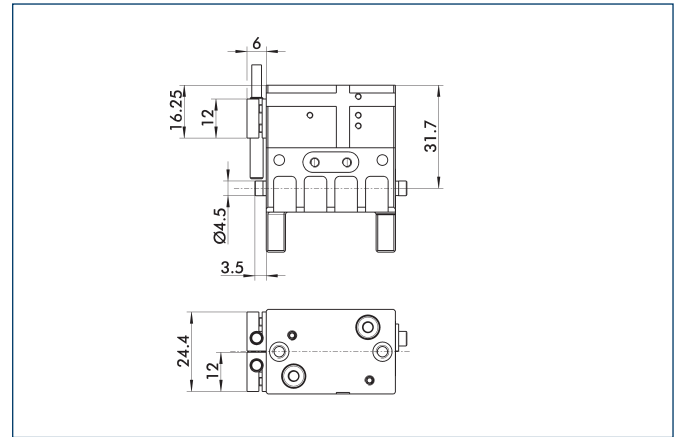


Position monitoring with two programmable positions per sensor. The end position monitoring is mounted in the C-slot.

Description	ID	Recommended product
Programmable Magnetic Switch		
MMS-P 22-S-M8-PNP	0301370	•
MMSK-P 22-S-PNP	0301371	
Connection cables		
KA BG08-L 4P-0500	0307767	
KA BG08-L 4P-1000	0307768	
KA BW08-L 4P-0500	0307765	
KA BW08-L 4P-1000	0307766	

- ① Please note the minimum permitted bending radii for the sensor cables, which are generally 35 mm.
- ① Per gripper one sensor (closer/NO) is required, optionally a cable extension.

Mounting kit for proximity switch IN 40

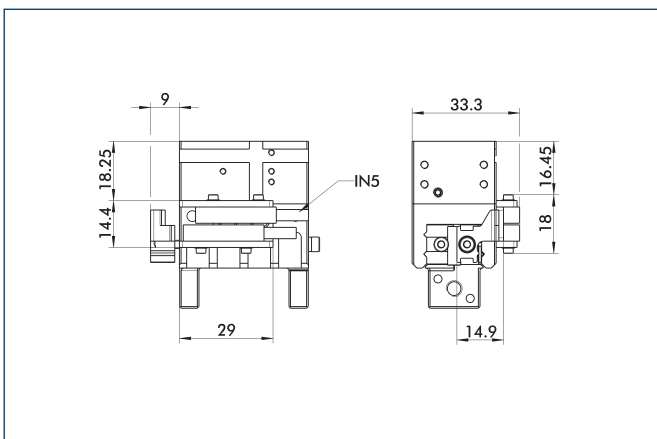


The mounting kit includes a bracket, switch cams and mounting screws. Proximity switches must be ordered separately.

Description	ID
Mounting kit for proximity switch	
AS-IN40-MPG-plus 40	0305525

- ① This mounting kit needs to be ordered optionally as an accessory.

Mounting kit for proximity switch IN 5

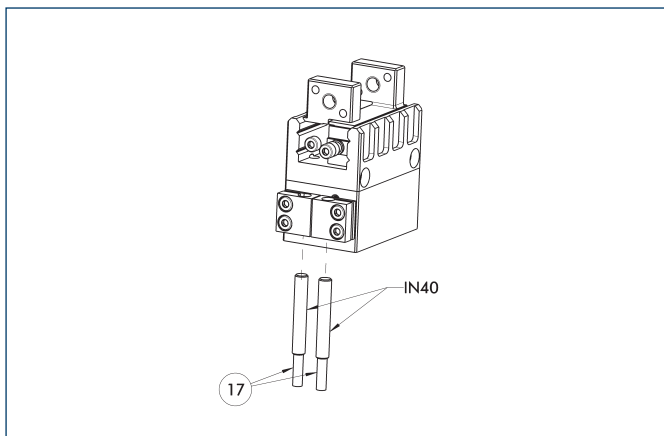


The mounting kit includes a bracket, switch cams and mounting screws. Proximity switches must be ordered separately.

Description	ID
Mounting kit for proximity switch	
AS-IN5-MPG-plus 40	0340152

- ① This mounting kit needs to be ordered optionally as an accessory.

Inductive proximity switches IN 40



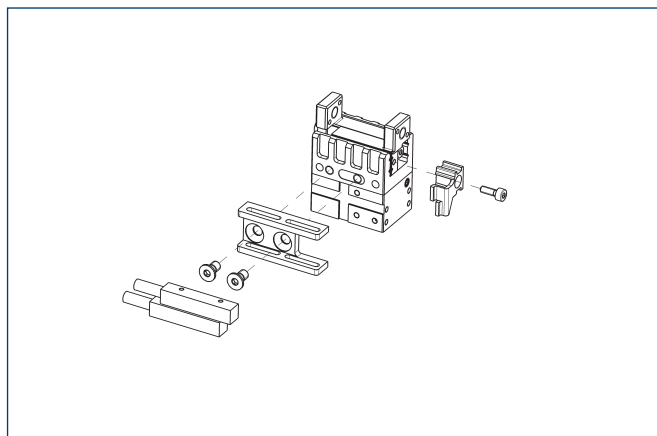
17 Cable outlet

End position monitoring mounted with mounting kit

Description	ID	Recommended product
Mounting kit for proximity switch		
AS-IN40-MPG-plus 40	0305525	
Inductive proximity switches		
IN 40-S-M8	0301474	•
IN 40-S-M12	0301574	
INK 40-S	0301555	
IN 40-S-M5-PNP	0301491	
IN 40-S-M5-NPN	0301492	

① Please note the minimum permitted bending radii for the sensor cables, which are generally 35 mm.

Inductive proximity switches IN 5

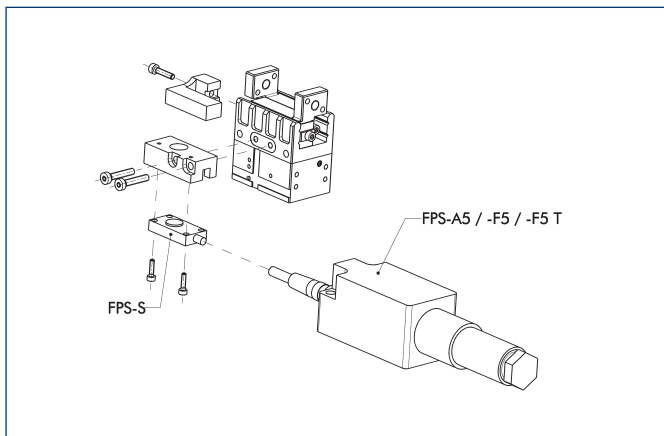


End position monitoring mounted with mounting kit

Description	ID	Recommended product
Mounting kit for proximity switch		
AS-IN5-MPG-plus 40	0340152	
Inductive proximity switches		
IN 5-S-M8	0301469	•
IN 5-S-M12	0301569	

① Please note the minimum permitted bending radii for the sensor cables, which are generally 35 mm.

Flexible Position Sensor



Flexible position monitoring of up to five positions

Description	ID
Mounting kit for FPS	
AS-FPS-MPG-plus 40	0301762
Electronic Processor	
FPS-F5	0301805
FPS-F5 T	0301807
Sensor	
FPS-S 13	0301705

① When using a FPS system, a FPS sensor (FPS-S) and a control unit (FPS-F5 / F5 T or A5) are required for each gripper as well as a mounting kit (AS), if listed. Cable extensions (KV) are available as options in the "Accessories" catalog section.