

CONTENTS

CPF20..... 18.2
 CP600-5..... 18.3
 CP602-5..... 18.4
 120662 handle kit..... 18.5
 MP06 18.6
 MP12 18.6
 X05-FD10 Traction manifold..... 18.9
 X05-FD16 Traction manifold..... 18.10
 X05-FD104 Traction manifold 18.11
 DIN connectors 18.13
 Pilot pistons..... 18.14
 Cavity plugs (CP cavities)..... 18.17
 Cavity plugs (NCS cavities)..... 18.18
 Seal kits (NCS cavities) 18.19
 Orifice plugs 18.20
 Screened orifice plug..... 18.22



Accessories
 Quick reference

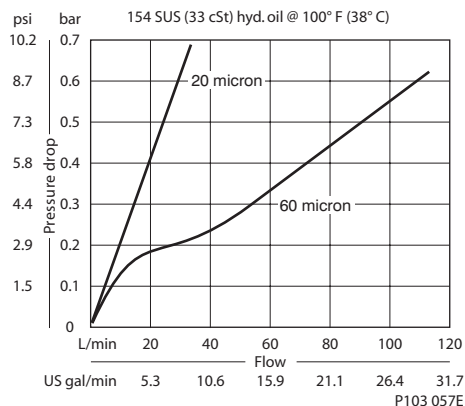
OPERATION

This cartridge assembly is a high pressure screen.

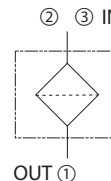
Not recommended as a substitute for hydraulic system filters.

SPECIFICATIONS

Performance graph



Schematic



P103 059

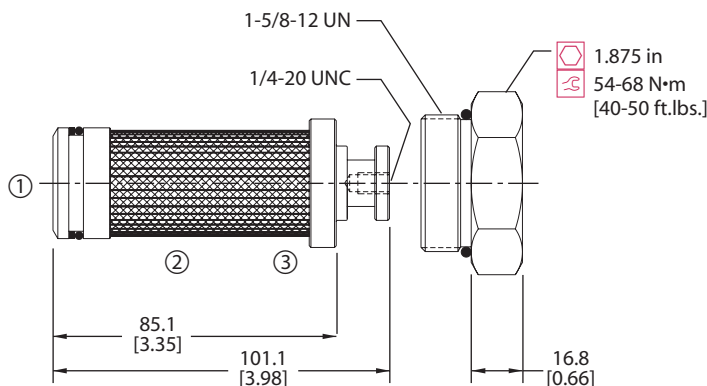
Specifications

| | |
|--------------------------------|--------------------|
| Pressure rating | 207 bar [3000 psi] |
| Nominal flow: 20 micron | 38 L/min [10 gpm] |
| Nominal flow: 60 micron | 114 L/min [30 gpm] |
| Weight | 0.47 kg [1.04 lbs] |
| Cavity | SDC20-3 |

DIMENSIONS

mm [in]

Cross section



P103 058

ORDERING INFORMATION

CPF20 - 3 - B - 20S - P - 020

- Seals**
 - B = Buna-N
 - V = Viton
- Seal kit**
 - 120608
 - 120609
- Housing and ports**
 - 0 = No Housing
 - 6B=AL, 3/4 BSP
 - 8B=AL, 1 BSP
 - 12S=AL, #12 SAE
 - 16S=AL, #16 SAE
 - Other housings available
- Housing P/N**
 - No Housing
 - CP20-3-6B
 - CP20-3-8B
 - CP20-3-12S
 - CP20-3-16S
- Filter mesh**
 - 020 = 20 micron
 - 060 = 60 micron
- Plug option**
 - P = Filter w/ #20 SAE hex plug
 - Omit = Filter only

P103 060E

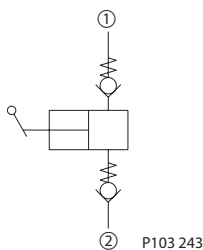
Accessories
 CPF20 Cavity screen

OPERATION

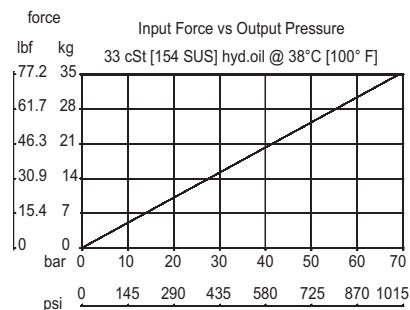
This is a manually operated uni-directional pump.

SPECIFICATIONS

Schematic



Specifications

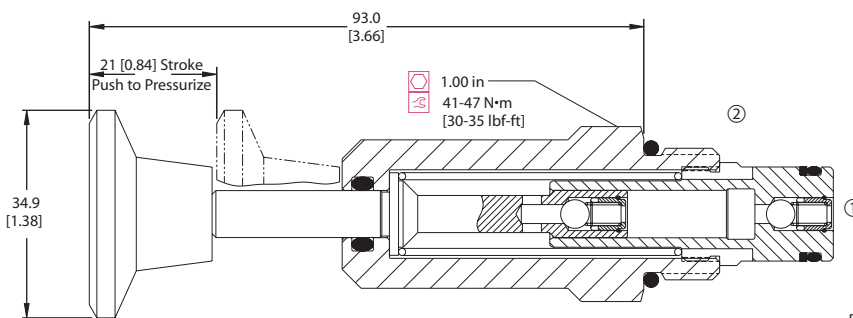


Specifications

| | |
|------------------------|----------------------------------|
| Pressure rating | 207 bar [3000 psi] |
| Displacement | 1.2 cu. cm [0.07 cu. in.]/stroke |
| Leakage | 6 drops/min @ rated pressure |
| Weight | 0.24 kg [0.52 lbs] |
| Cavity | SDC 10-2 |
| Pump force | 34N [7.7lbs] |

DIMENSIONS

mm [in]



ORDERING INFORMATION

| | | | |
|--------------|-----------------|--------------------------|---------------|
| CP600-5-B-6S | | | |
| Seals | | Housing & Ports | Housing P/N |
| B = Buna-N | Seal kit 120015 | 0 = Cartridge only | No Housing |
| V = Viton | 120016 | 6S = AL, #6 SAE | CP10-2-6S |
| | | 8S = AL, #8 SAE | CP10-2-8S |
| | | DG3B = AL, 3/8 BSPP | SDC10-2-DG-3B |
| | | DG4B = AL, 1/2 BSPP | SDC10-2-DG-4B |
| | | Other housings available | |

P103 132E

Accessories
 CP600-5 pump

OPERATION

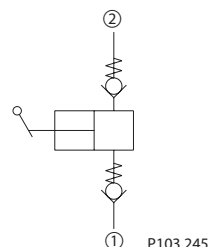
Manually operated pump.

SPECIFICATIONS

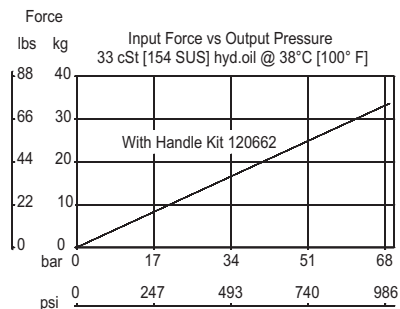
Specifications

| | |
|------------------------|------------------------------------------------------|
| Pressure rating | 207 bar [3000 psi] |
| Displacement | 9.2 cm ³ [0.56 in ³] / stroke |
| Leakage | 6 drops/ minute @ rated pressure |
| Cavity | SDC16-2 |

Schematic



Performance graph

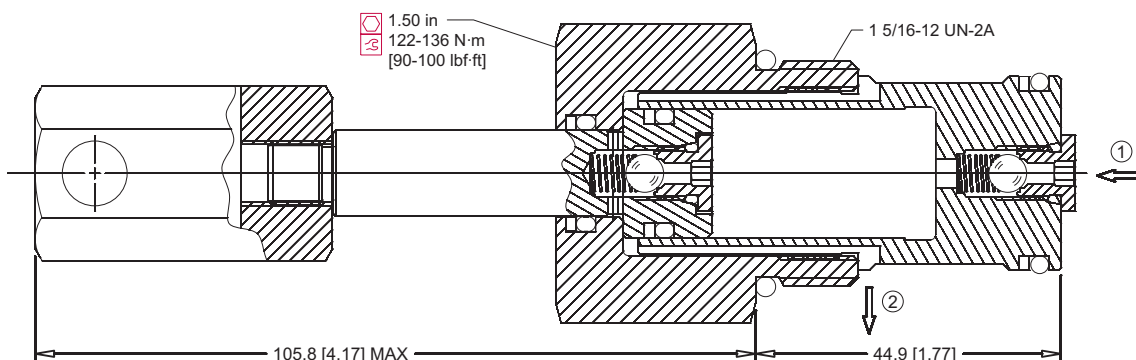


P103 129E

DIMENSIONS

mm [in]

Cross section



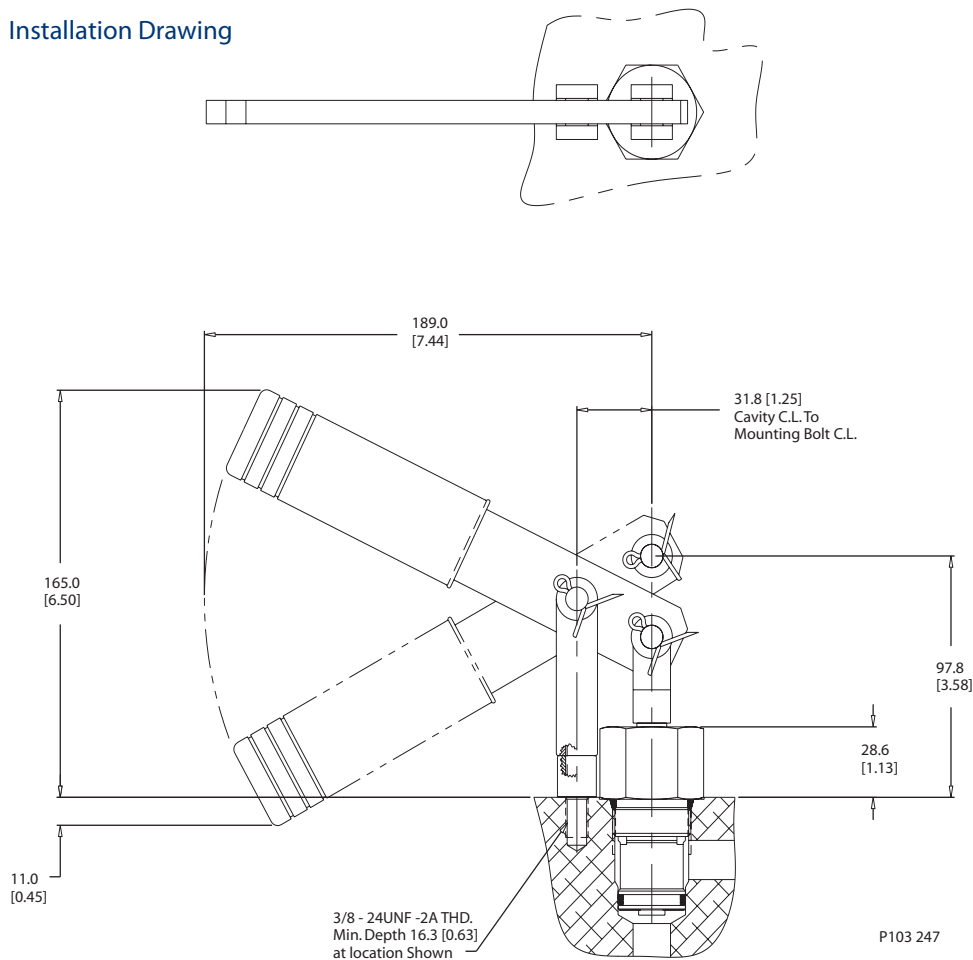
ORDERING INFORMATION

| | | | | | |
|-------------------------------|----------|--------------------------|--|-------------|--|
| CP602-5-B-12S | | Housing and Ports | | Housing P/N | |
| Seals | Seal kit | | | No Housing | |
| B = Buna-N | 120019 | 0 = No Housing | | 11083731 | |
| V = Viton | 120030 | 6S = #6 SAE | | 11083691 | |
| Handle kit is required | | 8S = #8 SAE | | CP16-2-12S | |
| - sold separately PN - 120662 | | 12S = AL#12 SAE | | CP16-2-16S | |
| | | 16S = AL#16 SAE | | CP16-2-6B | |
| | | 6B = AL 3/4 BSPP | | CP16-2-8B | |
| | | 8B = AL 1 BSPP | | | |
| | | Other housings available | | | |

P103 133E

DIMENSIONS

Installation Drawing



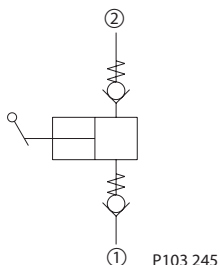
Accessories
 120662 handle kit

ORDERING INFORMATION

To order, request part number 120662—handle kit

SPECIFICATIONS

Schematic



Specifications

| Size | | 06 | 12 |
|-------------------------|--------------------|---------|---------|
| Displacement Per Stroke | cm ³ | 0.94 | 5 |
| | [in ³] | [0.057] | [0.305] |
| Max. pressure | bar | 315 | 315 |
| | [psi] | [4569] | [4569] |
| NCS Cavity | | 06/2 | 12/2 |
| Max tightening torque | Nm | 40 | 80 |
| | [lbf·in] | [354] | [708] |
| Weight | cartridge | kg | |
| | [lb] | 0.254 | |
| | | [0.560] | |
| cartridge with handle | kg | 0.550 | |
| | [lb] | [1.213] | |
| with housing | kg | 0.854 | |
| | [lb] | [1.883] | |

Description

These small displacement hand pumps are used typically for piloting the operation of small hydraulic cylinders or valves. These pumps can be mounted inline using the standard housing or in special blocks. For smooth operation, inlet lines should not be excessively long, and the vertical distance between pump and tank level no more than 300 mm.

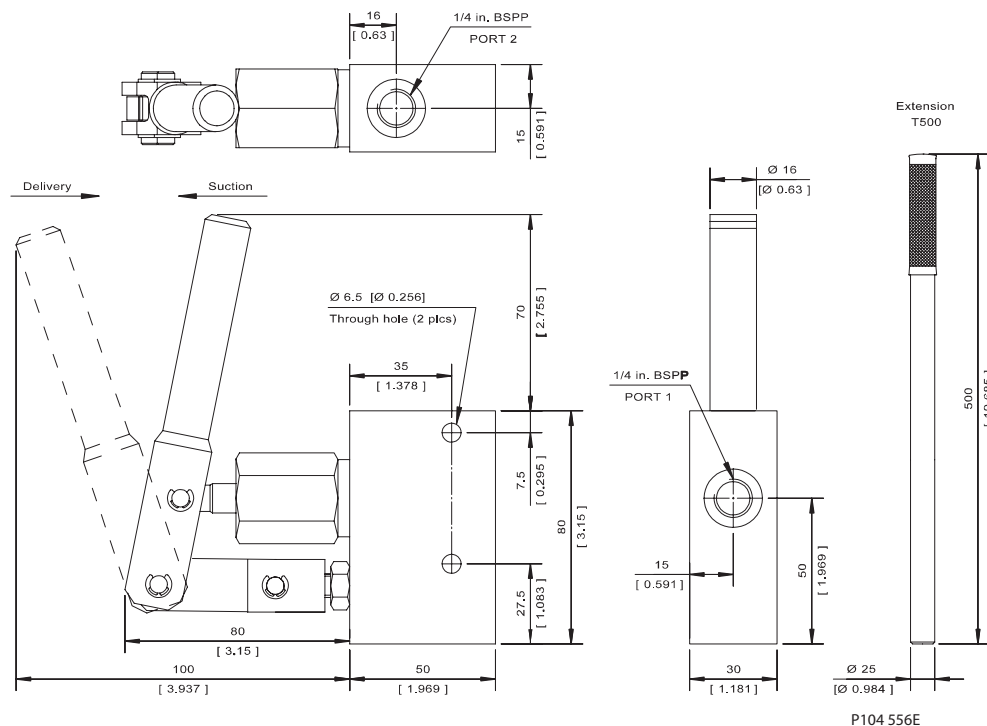
These pumps can work in outdoor applications if the ambient air is not contaminated by powder and dust.

Accessories
 MP06 and MP 12 hand pump

DIMENSIONS

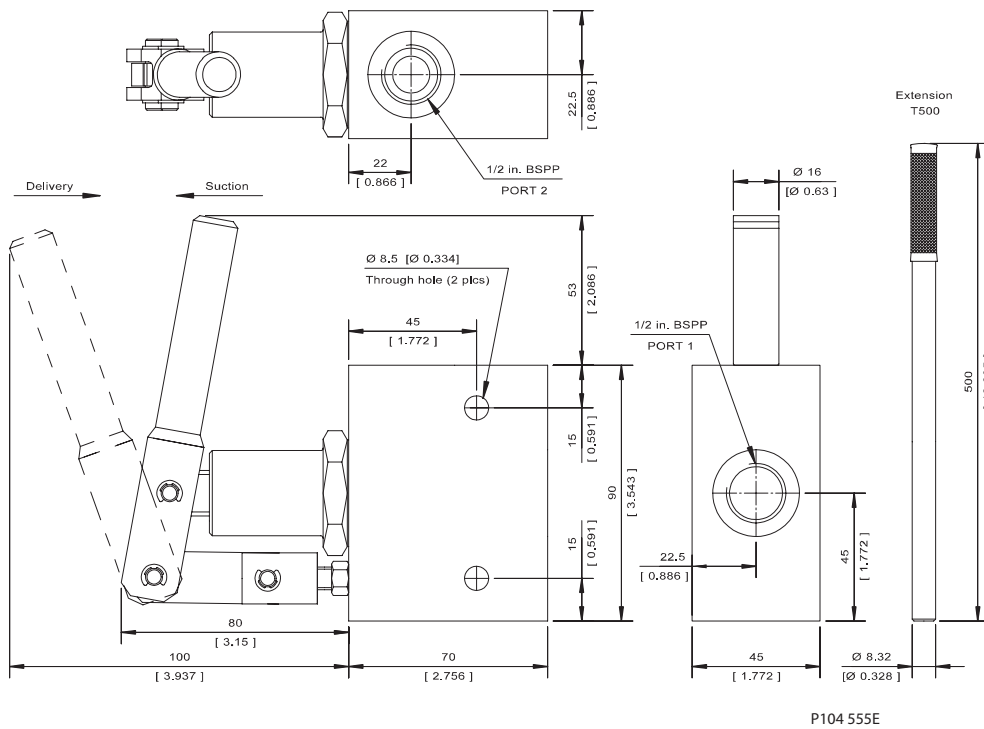
mm [in]

MP06 detail drawing



DIMENSIONS
(continued)
 mm [in]

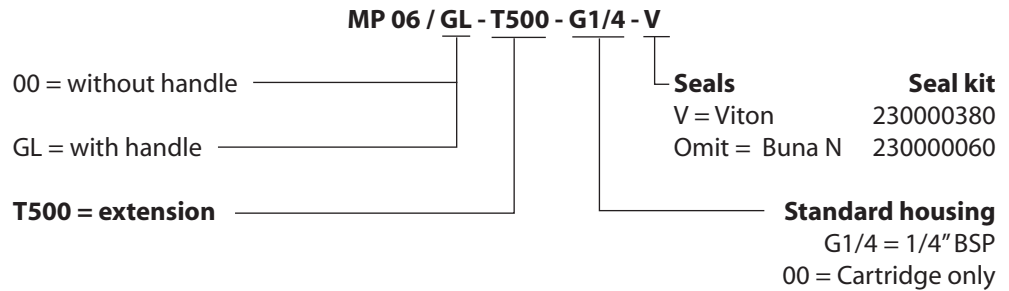
MP12 detail drawing



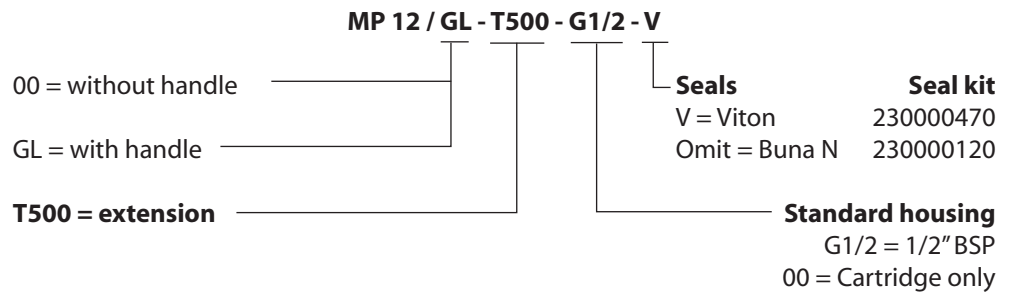
Accessories
 MP 06 and MP 12 hand pump

**ORDERING
 INFORMATION**

Example of designation MP 06



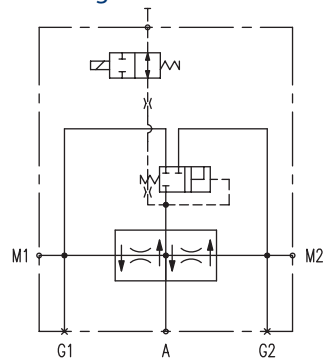
Example of designation MP 12



OPERATION

This valve provides electrically actuated traction control for hydrostatic systems with one pump and two motors in parallel. In normal operation, fluid passes freely through the valve. When the solenoid is energized, fluid is forced through the flow divider/combiner, preventing wheel spin or motor over speed.

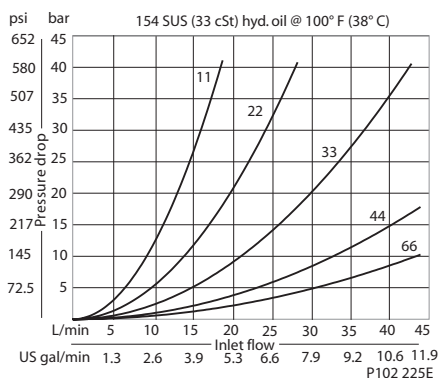
Schematic diagram



P104 584

PERFORMANCE

Performance curve

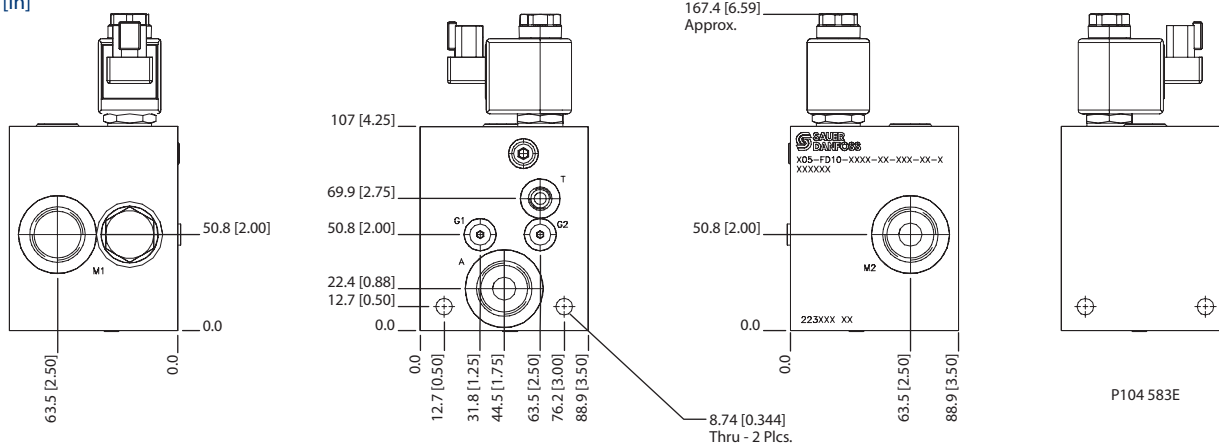


Specifications

| | |
|--------------------------------------|--------------------------|
| Rated pressure | 210 bar [3000 psi] |
| Rated flow at 7 bar [100 psi] | 45 l/min [12 US gal/min] |
| Weight | 2.79 kg [6.15 lb] |

DIMENSIONS

mm [in]



ORDERING INFORMATION

X05-FD10-12S-66-12-DE-B

PORT SIZES & MATERIAL
6061 T6 ALUMINUM
8S = M1, M2 & A - #8 SAE
C1 & G2 - #2 SAE
T - #4 SAE
12S = M1, M2 & A - #12 SAE
C1 & G2 - #2 SAE
T - #4 SAE
4B = M1, M2 & A - 1/2 BSP
G1 & G2 - 1/8 BSP
T - 1/4 BSP
6B = M1, M2 & A - 3/4 BSP
C1 & G2 - 1/8 BSP
T - 1/4 BSP

SEALS
B = BUNA-N
V = VITON

TERMINATION

VOLTAGE
SEE CATALOG FOR SV08-22-01

FLOW DIVISION
SEE CATALOG FOR CP340-1

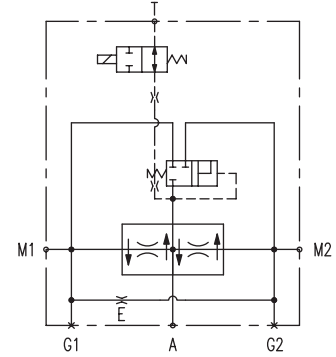
P104 585

Accessories
X05-FD10

OPERATION

This valve provides electrically actuated traction control for hydrostatic systems with one pump and two motors in parallel. In normal operation, fluid passes freely through the valve. When the solenoid is energized, fluid is forced through the flow divider/combiner, preventing wheel spin or motor over speed.

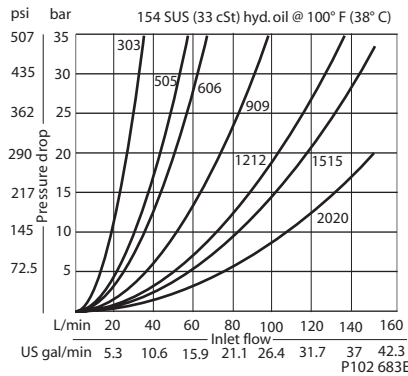
Schematic diagram



P104 588

PERFORMANCE

Performance curve

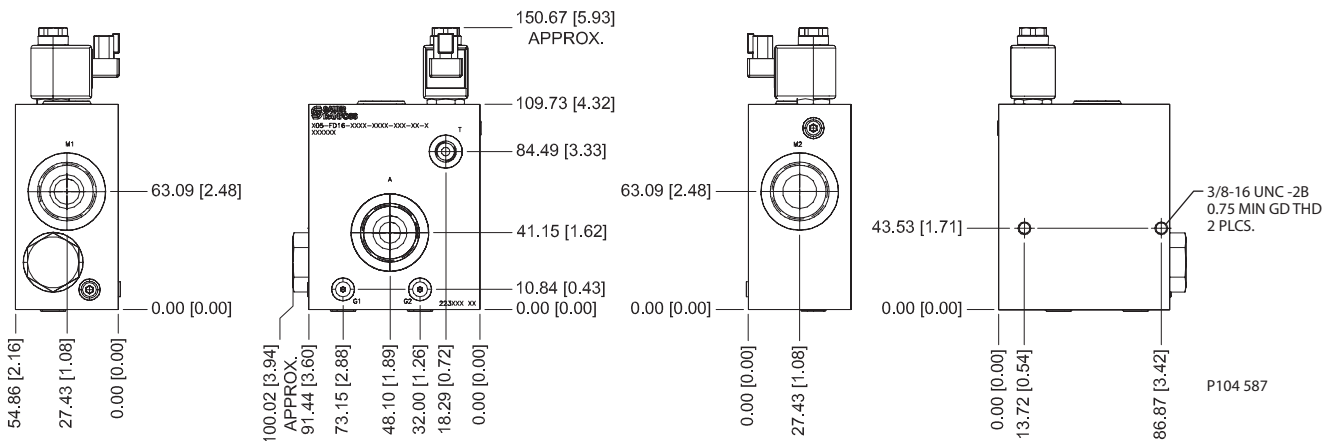


Specifications

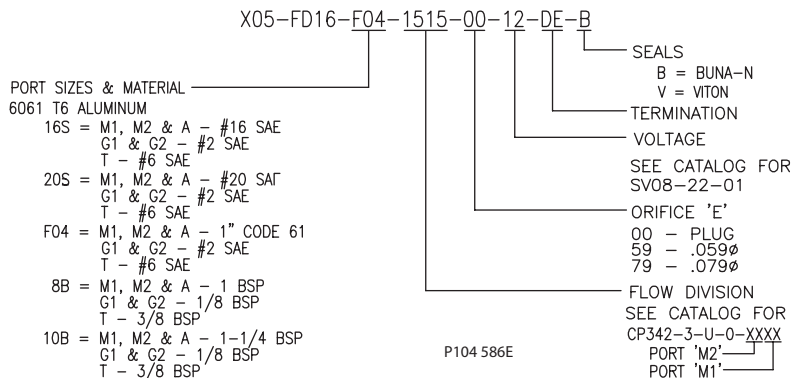
| | |
|--------------------------------------|---------------------------|
| Rated pressure | 210 bar [3000 psi] |
| Rated flow at 7 bar [100 psi] | 150 l/min [40 US gal/min] |
| Weight | 4.48 kg [9.88 lb] |

DIMENSIONS

mm [in]



ORDERING INFORMATION



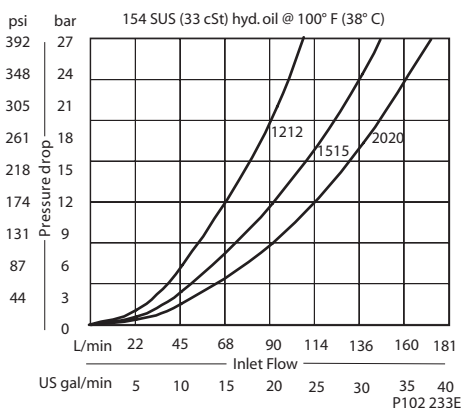
Accessories
X05-FD16

OPERATION

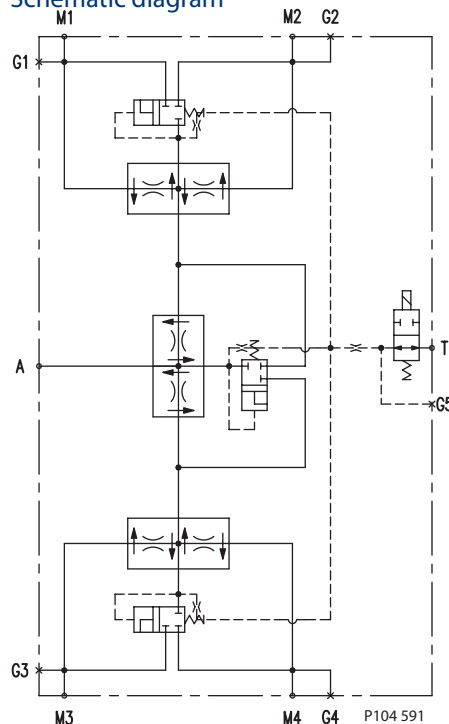
This valve provides electrically actuated traction control for hydrostatic systems with one pump and four motors in parallel. In normal operation, fluid passes freely through the valve. When the solenoid is energized, fluid is forced through the flow divider/combiners. The result is equal flow to all four motors, preventing wheel spin or motor over speed.

PERFORMANCE

Performance curve



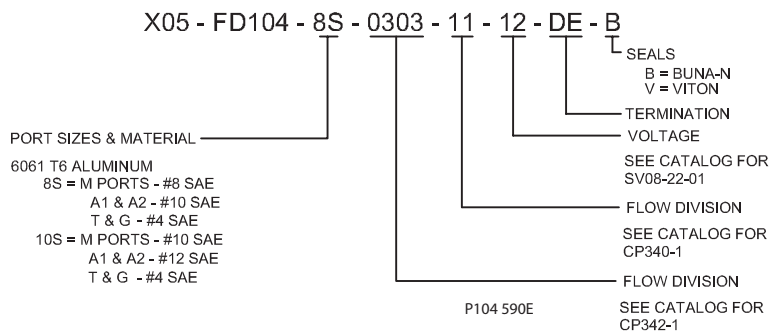
Schematic diagram



Specifications

| | |
|--------------------------------------|--------------------------|
| Rated pressure | 230 bar [3300 psi] |
| Rated flow at 7 bar [100 psi] | 45 l/min [12 US gal/min] |
| Weight | 8.74 kg [19.74 lb] |

ORDERING INFORMATION



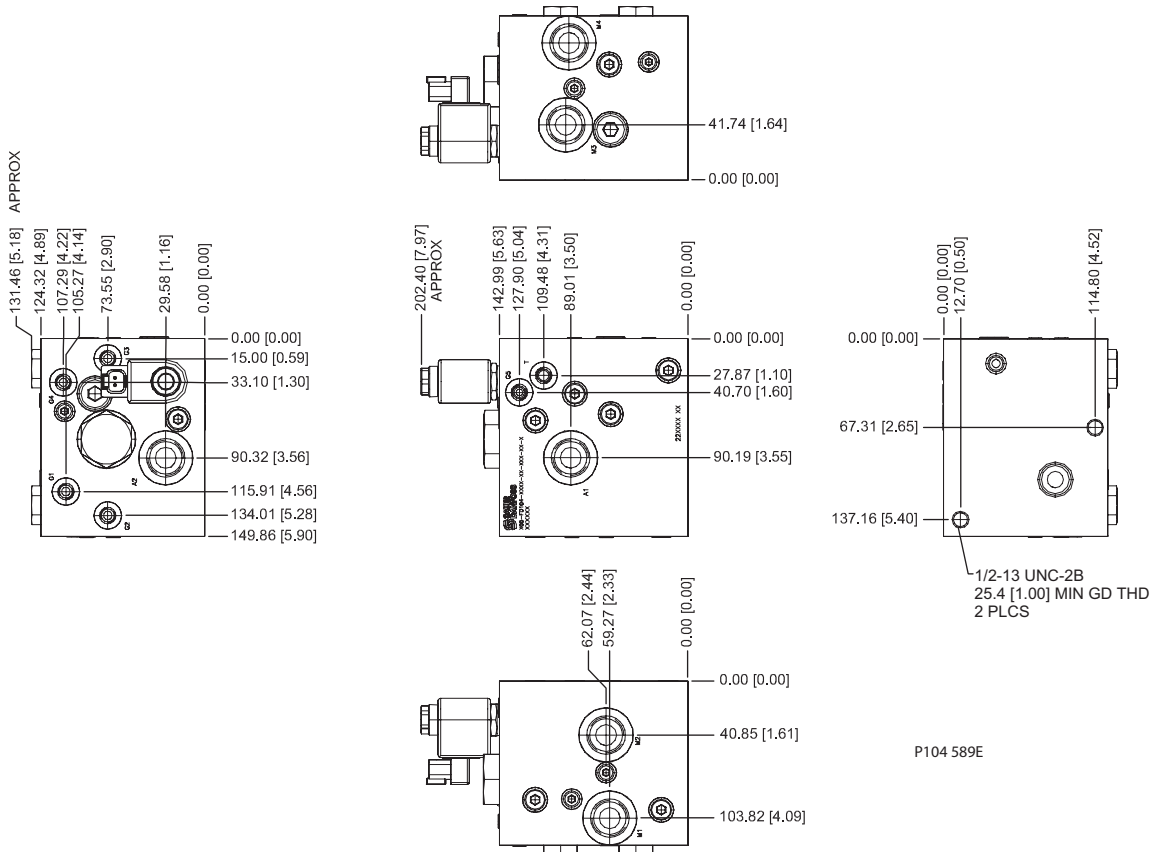
DIMENSIONS

See next page.

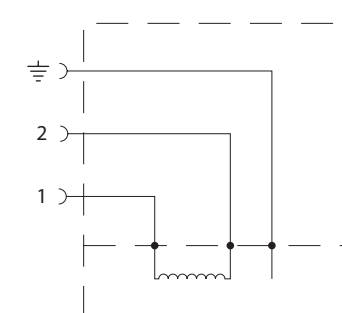
Accessories
 X05-FD104

DIMENSIONS

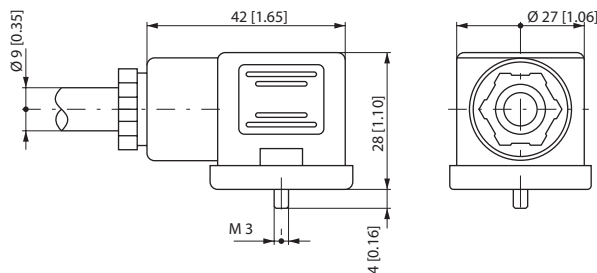
mm [in]



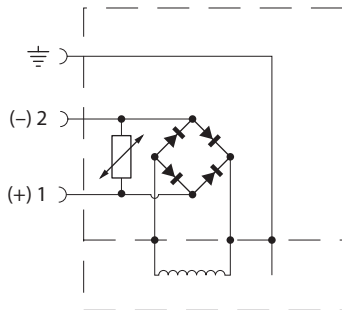
STANDARD CONNECTORS TO DIN 43650



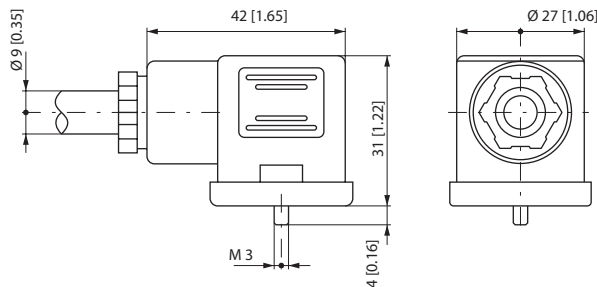
TYPE A CONNECTOR



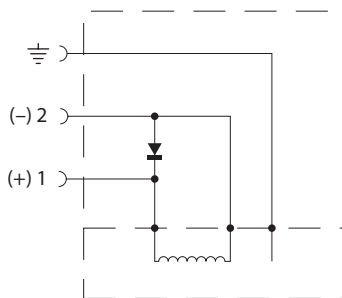
Standard connector for use with DC input.
 Type A
 Order no. 088010080



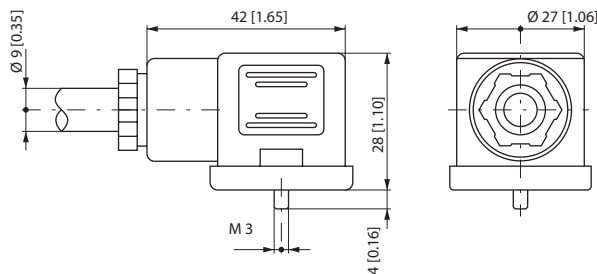
TYPE C CONNECTOR



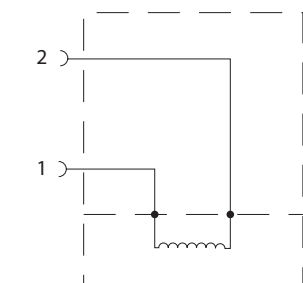
Full wave bridge rectifier with 4 diodes and VDR protecting the a.c. side against overvoltage from electrical power supply.
 Type C
 Order no. 088010060



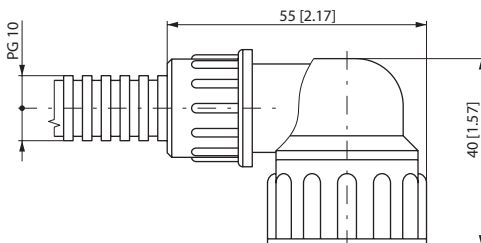
TYPE E CONNECTOR



With diode blocking overvoltage on opening.
 Type E
 Order no. 088010410



TYPE K CONNECTOR



Standard connector to Kostal pattern, for use with DC input.
 Type K
 Order no. 088010350

REMARK

For details of use, see technical data relevant to the individual solenoid valves. All connector are supplied unassembled. Connectors with indicator lights are available on request (Consult factory).

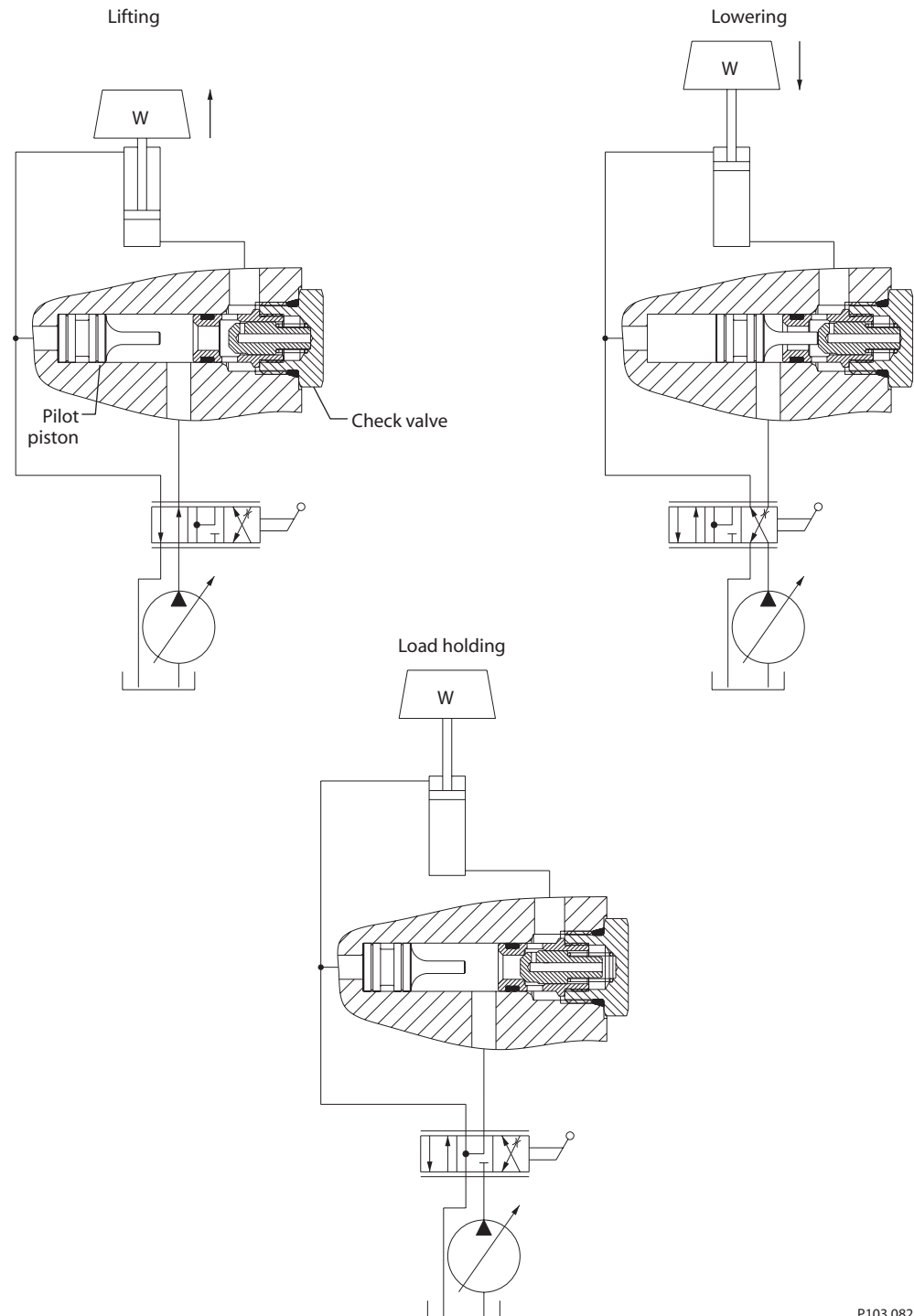
P104 557E

OPERATION

Pilot pistons used with check valve cartridges are an economical way to create pilot-operated check valve functions in custom Hydraulic Integrated Circuits (HIC).

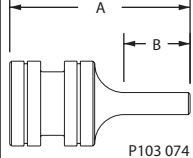
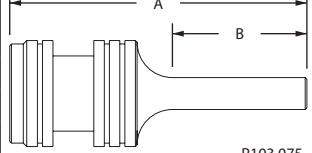
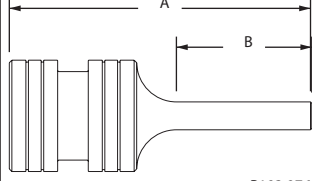
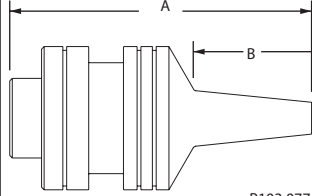
EXAMPLE

Application of pilot pistons



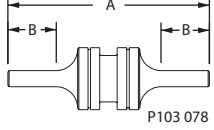
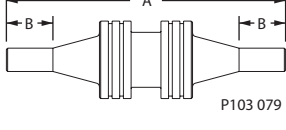
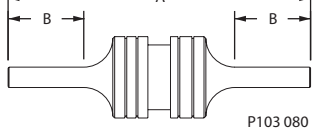
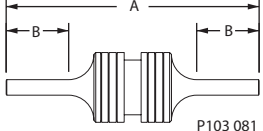
Accessories
 Pilot pistons

Single-acting pilot pistons

| Series | Compatible valves | Pilot ratio | Seals (optional) | Pilot piston order code | A mm [in] | B mm [in] | Bore diameter* mm [in] | |
|--------|-------------------|-------------|----------------------------------------------|-------------------------|------------------|------------------|-----------------------------------|---------------------------------------------------------------------------------------------------|
| 8 | CV08-NP | 4:1 | 1) 720092 O-rings 2) 720500 back-up rings | 621460 | 26.97 [1.062] | 14.27 [0.562] | Ø 12.70 ± 0.03 [0.501 ± 0.001] |  P103 074 |
| 10 | CV10-NP | 4:1 | 1) 720178 O-ring 2) 720412 back-up rings | 621175 | 44.45 [1.750] | 25.40 [1.000] | Ø 15.90 ± 0.03 [0.626 ± 0.001] |  P103 075 |
| | CP100-3 | 2.5:1 | | 621176 | 47.63 [1.875] | 28.58 [1.125] | | |
| | | 621535 | | 38.10 [1.500] | 19.05 [0.750] | | | |
| 12 | CP101-1 | 4:1 | 1) 720031 O-ring 2) 720385 back-up rings | 621538 | 60.33 [2.375] | 34.93 [1.375] | Ø 22.25 ± 0.03 [0.876 ± 0.001] |  P103 076 |
| 16 | CP102-1 | 4:1 | 1) 720033 O-ring 2) 720375 back-up rings | 620600 | 60.20 [2.370] | 23.55 [0.927] | Ø 28.63 ± 0.03 [1.127 ± 0.001] |  P103 077 |

Consult factory for bore details.

Double-acting pilot pistons

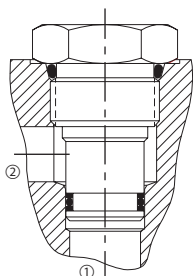
| Series | Compatible valves | Pilot ratio | Seals (optional) | Pilot piston order code | A mm [in] | B mm [in] | Bore diameter* mm [in] | |
|--------|-------------------|-------------|----------------------------------------------|-------------------------|------------------|------------------|-----------------------------------|---------------------------------------------------------------------------------------|
| 8 | CV08-NP | 4:1 | 1) 720092 O-rings 2) 720500 back-up rings | 621457 | 41.28 [1.625] | 14.27 [0.562] | Ø 12.70 ± 0.03 [0.501 ± 0.001] |  |
| | | | | 621553 | 52.37 [2.062] | 19.84 [0.781] | | |
| | | | | 625138 | 38.10 [1.500] | 12.70 [0.500] | | |
| | | | | 625298 | 49.53 [1.950] | 18.42 [0.725] | | |
| 10 | CV10-NP | 4:1 | 1) 720178 O-ring 2) 720412 back-up rings | 621058 | 60.50 [2.382] | 20.73 [0.816] | Ø 15.90 ± 0.03 [0.626 ± 0.001] |  |
| | | | | 621400 | 57.15 [2.250] | 19.05 [0.750] | | |
| | CP100-3 | 2.5:1 | | 621692 | 69.85 [2.750] | 25.40 [1.000] | | |
| | 625104 | | | 66.04 [2.600] | 23.50 [0.925] | | | |
| 12 | CP101-1 | 4:1 | 1) 720031 O-ring 2) 720385 back-up rings | 621539 | 82.55 [3.250] | 28.58 [1.125] | Ø 22.25 ± 0.03 [0.876 ± 0.001] |  |
| 16 | CP102-1 | 4:1 | 1) 720033 O-ring 2) 720375 back-up rings | 621540 | XXX | XXX | Ø 28.63 ± 0.03 [1.127 ± 0.001] |  |

Consult factory for bore details.

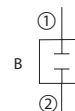
FUNCTION

Cavity plugs are used to block flow into and out of set ports or to block flow between given ports.

2 WAY PLUG



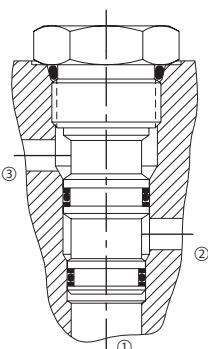
Plug options



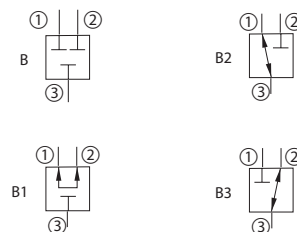
P103 061

P103 065

3 WAY PLUG



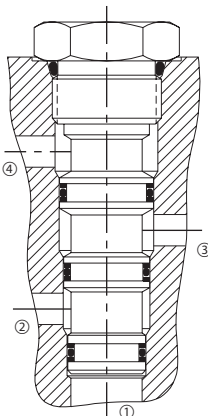
Plug options



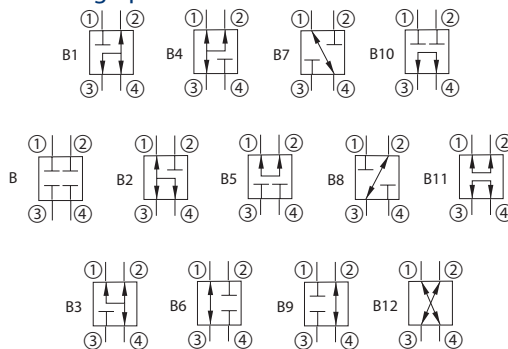
P103 062

P103 066

4 WAY PLUG



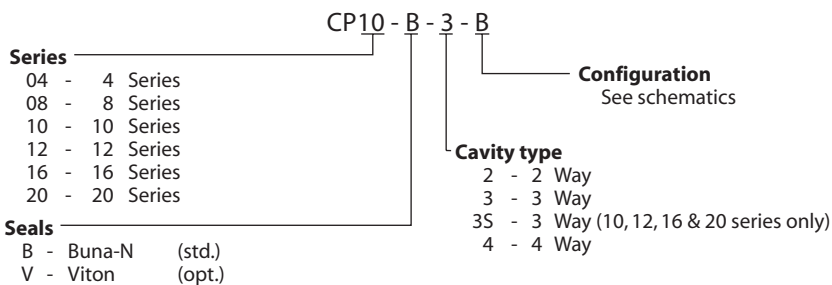
Plug options



P103 063

P103 067

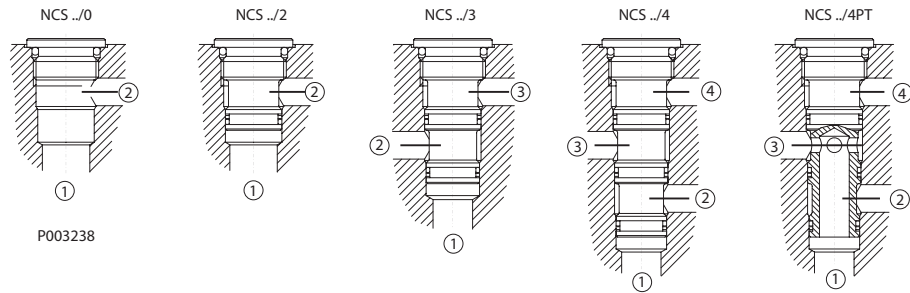
ORDERING INFORMATION



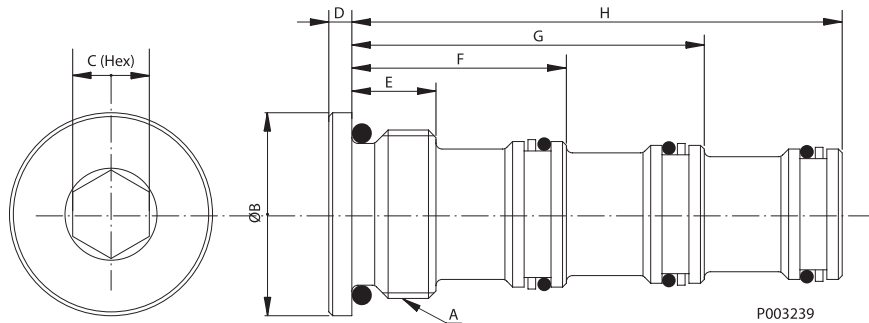
P103 064

Accessories
Cavity plugs

PLUGS FOR NCS CAVITIES



P003238

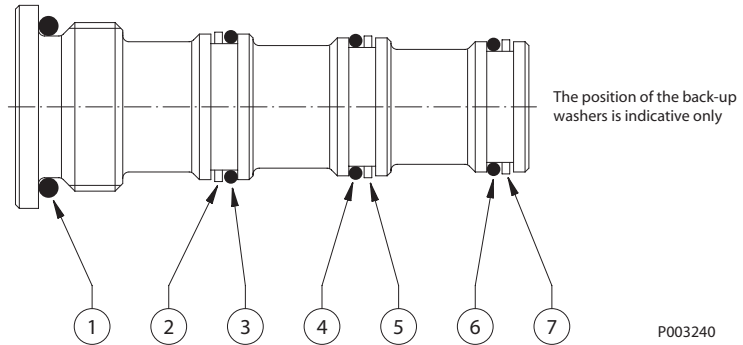


P003239

Dimensions

| Type | Dimensions-mm | | | | | | | | Order number for plug complete | Weight of plug complete-kg [lbs.] |
|------------|---------------|-----------|----|----------|-------------|-------------|-------------|-------------|--------------------------------|-----------------------------------|
| | A | B | C | D | E | F | G | H | | |
| NCS 04/0 | M18x1.5 | 22 [0.87] | 8 | 3 [0.12] | 10.5 [0.41] | — | — | — | 92.00.010.1 | 0.018 [0.04] |
| NCS 04/2 | M18x1.5 | 22 [0.87] | 8 | 3 [0.12] | — | 24.5 [0.96] | — | — | 92.00.009.1 | 0.035 [0.08] |
| NCS 04/3 | M18x1.5 | 22 [0.87] | 8 | 3 [0.12] | — | — | 39.5 [1.56] | — | 92.00.008.1 | 0.057 [0.13] |
| NCS 04/4 | M18x1.5 | 22 [0.87] | 8 | 3 [0.12] | — | — | — | 54.5 [2.15] | 92.00.007.1 | 0.070 [0.15] |
| NCS 04/4PT | M18x1.5 | 22 [0.87] | 8 | 3 [0.12] | — | — | — | 54.5 [2.15] | 92.00.021.1 | 0.060 [0.13] |
| NCS 06/0 | M22x1.5 | 26 [1.02] | 10 | 3 [0.12] | 11 [0.43] | — | — | — | 92.00.006.1 | 0.032 [0.07] |
| NCS 06/2 | M22x1.5 | 26 [1.02] | 10 | 3 [0.12] | — | 28 [1.10] | — | — | 92.00.004.1 | 0.060 [0.13] |
| NCS 06/3 | M22x1.5 | 26 [1.02] | 10 | 3 [0.12] | — | — | 46 [1.81] | — | 92.00.014.1 | 0.098 [0.22] |
| NCS 06/4 | M22x1.5 | 26 [1.02] | 10 | 3 [0.12] | — | — | — | 64 [2.52] | 92.00.013.1 | 0.120 [0.26] |
| NCS 06/4PT | M22x1.5 | 26 [1.02] | 10 | 3 [0.12] | — | — | — | 64 [2.52] | 92.00.020.1 | 0.100 [0.22] |
| NCS 12/0 | M33x2 | 38 [1.50] | 12 | 3 [0.12] | 15 [0.59] | — | — | — | 92.00.018.1 | 0.117 [0.26] |
| NCS 12/2 | M33x2 | 38 [1.50] | 12 | 3 [0.12] | — | 38 [1.50] | — | — | 92.00.017.1 | 0.200 [0.44] |
| NCS 12/3 | M33x2 | 38 [1.50] | 12 | 3 [0.12] | — | — | 63 [2.48] | — | 92.00.016.1 | 0.280 [0.62] |
| NCS 12/4 | M33x2 | 38 [1.50] | 12 | 3 [0.12] | — | — | — | 88 [3.46] | 92.00.015.1 | 0.370 [0.81] |
| NCS 12/4PT | M33x2 | 38 [1.50] | 12 | 3 [0.12] | — | — | — | 88 [3.46] | 92.00.022.1 | 0.310 [0.68] |

NCS



P003240

| Type | Seals back-up washers (composition) | Spares: Set of O-rings and back-up washers (pack of 10 sets minimum) | |
|----------|-------------------------------------|----------------------------------------------------------------------|-------------|
| | | Standard seals | Viton seals |
| NCS 04/0 | 1 | 230030070 | 230370070 |
| NCS 04/2 | 1 2 3 | 230000190 | 230000390 |
| NCS 04/3 | 1 2 3 4 5 | 230000160 | 230000450 |
| NCS 04/4 | 1 2 3 4 5 6 7 | 230000250 | 230000460 |
| NCS 06/0 | 1 | 230080210 | 230390210 |
| NCS 06/2 | 1 2 3 | 230000060 | 230000380 |
| NCS 06/3 | 1 2 3 4 5 | 230000070 | 230000110 |
| NCS 06/4 | 1 2 3 4 5 6 7 | 230000080 | 230000350 |
| NCS 12/0 | 1 | 230030110 | 230370110 |
| NCS 12/2 | 1 2 3 | 230000120 | 230000470 |
| NCS 12/3 | 1 2 3 4 5 | 230000130 | 230000360 |
| NCS 12/4 | 1 2 3 4 5 6 7 | 230000100 | 230000480 |

OPERATION

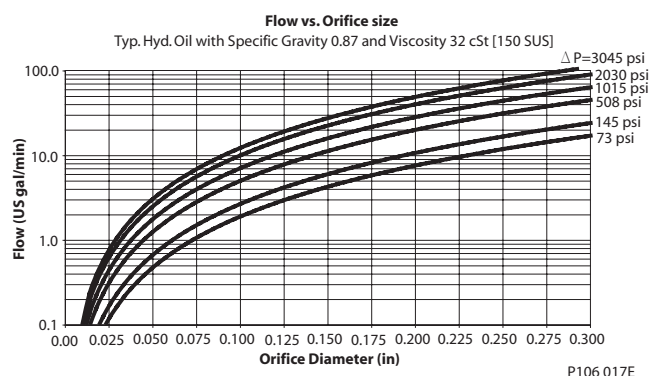
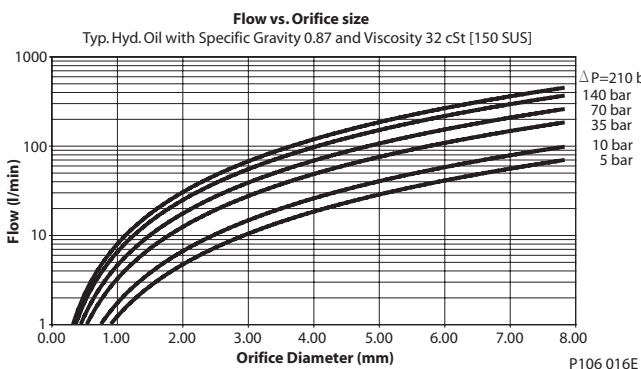
Install in manifold to restrict fluid flow.

Schematic



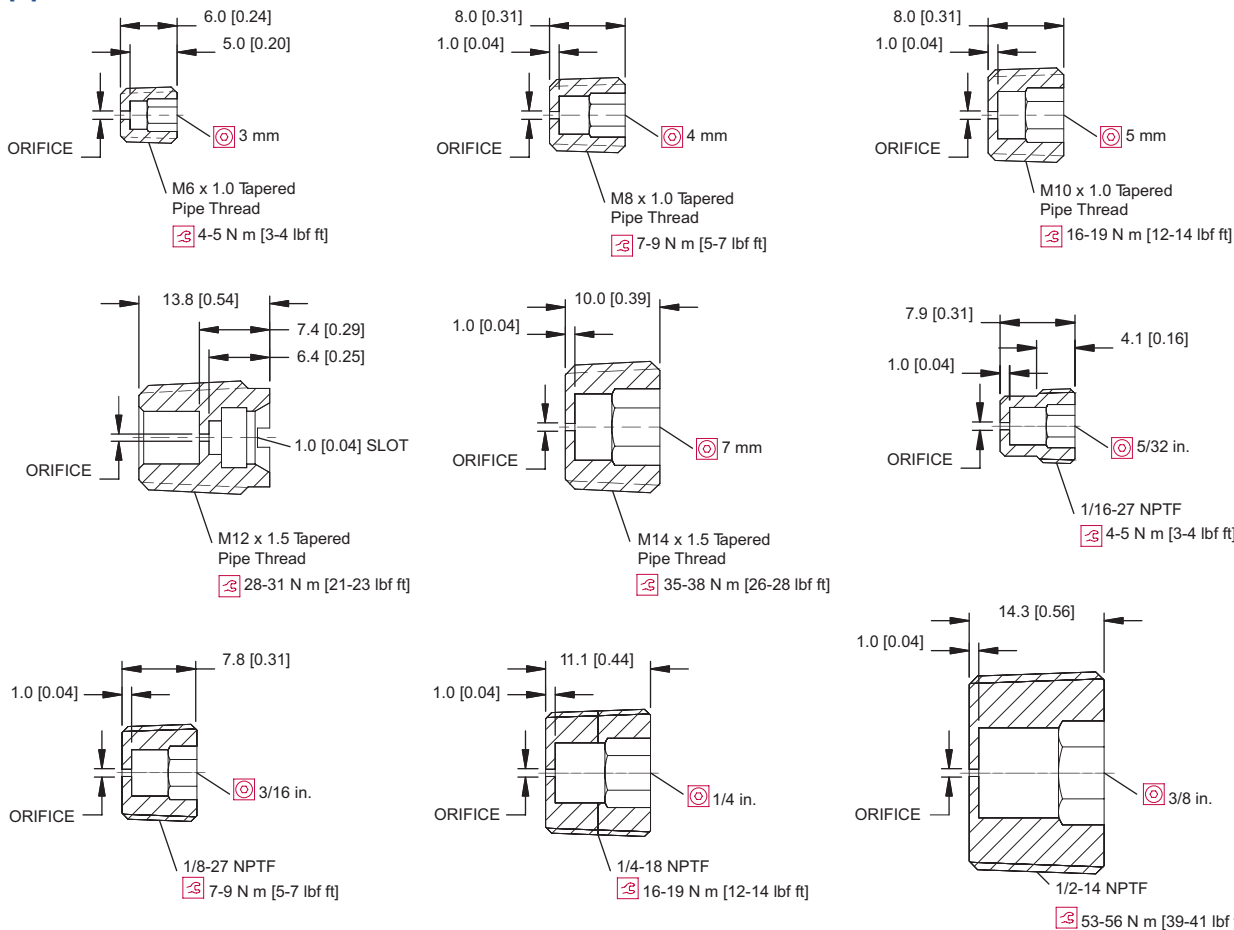
P106 014

SPECIFICATIONS



DIMENSIONS

mm [in]



P106 015E

**ORDERING
 INFORMATION**

| Orifice Diameter | | Orifice Plug Part Number | | | | | | | | |
|------------------|-------|--------------------------|-------------|-------------|-------------|------------------------------|------------------------------|-------------------------------|-------------------------------|-------------------------------|
| | | Plug Thread Size | | | | | | | | |
| mm | [in] | 1/16-27 NPTF | 1/8-27 NPTF | 1/4-18 NPTF | 1/2-14 NPTF | M6 x 1.0 Tapered Pipe Thread | M8 x 1.0 Tapered Pipe Thread | M10 x 1.0 Tapered Pipe Thread | M12 x 1.5 Tapered Pipe Thread | M14 x 1.5 Tapered Pipe Thread |
| None | None | | | 320151 | 320153 | 624910 | 321561 | 321562 | 626059 | 321660 |
| 0.33 | 0.013 | 11008337 | | | | 625958 | | | | |
| 0.38 | 0.015 | 620510 | | | | 625414 | | | | |
| 0.43 | 0.017 | | | | | | | | 626062 | |
| 0.46 | 0.018 | | | | | | | | | |
| 0.51 | 0.020 | 621510 | 11015116 | | | 624898 | 625190 | | | |
| 0.61 | 0.024 | 622417 | | | | 624904 | | 624478 | | |
| 0.64 | 0.025 | 620634 | | | | 624862 | 624838 | | | |
| 0.71 | 0.028 | 622846 | | | | 62486 | | | | |
| 0.76 | 0.030 | 620296 | 620299 | | | | | | | |
| 0.79 | 0.031 | | | | | 624855 | 624857 | 624308 | 626133 | 625266 |
| 0.81 | 0.032 | 624410 | | | | | | | | |
| 0.89 | 0.035 | 622447 | | | | 624903 | 625346 | 625424 | | |
| 0.91 | 0.036 | 620777 | | | | 626022 | | | | |
| 0.97 | 0.038 | 621608 | | | | | | | | |
| 0.99 | 0.039 | | | | | 624856 | 624821 | | | |
| 1.02 | 0.040 | 620511 | | | | | | | | |
| 1.07 | 0.042 | 621702 | | | | 626075 | | | | |
| 1.14 | 0.045 | 621210 | | | | | | | | |
| 1.19 | 0.047 | 620814 | 620591 | | | 625929 | 624892 | 624427 | | |
| 1.32 | 0.052 | 620573 | | | | 624911 | 626100 | | | |
| 1.40 | 0.055 | 620572 | | | | | | | | |
| 1.50 | 0.059 | | | | | 624846 | 624822 | 624152 | | |
| 1.52 | 0.060 | 620297 | | | | | | | | |
| 1.57 | 0.062 | 621496 | | | | | | | | |
| 1.60 | 0.063 | | | | | 625197 | 624902 | 625252 | | |
| 1.70 | 0.067 | | | | | 624844 | | | | |
| 1.78 | 0.070 | 621554 | | | | 625871 | 626041 | | | |
| 1.98 | 0.078 | 622117 | | | | | | | | |
| 2.01 | 0.079 | | | | | 626135 | 624681 | 624153 | | |
| 2.03 | 0.080 | | | | | | | | | |
| 2.06 | 0.081 | | | | | | | | | |
| 2.13 | 0.084 | | | | | | | | | |
| 2.18 | 0.086 | 621246 | | | | | | | | |
| 2.21 | 0.087 | | | | | | 625067 | | | |
| 2.26 | 0.089 | | | | | | | | | |
| 2.29 | 0.090 | | | | | 625002 | | | | |
| 2.39 | 0.094 | | 622721 | | | 625542 | | 626138 | | |
| 2.44 | 0.096 | 621051 | | 626010 | | | | | | |
| 2.46 | 0.097 | | | | | | 626185 | | | |
| 2.49 | 0.098 | | | | | | | | | |
| 2.59 | 0.102 | | | | | | 625630 | | | |
| 2.64 | 0.104 | | | | | | | | | |
| 2.67 | 0.105 | | | 621665 | | | | | | |
| 2.74 | 0.108 | | | | | | | 625049 | | |
| 2.79 | 0.110 | | | | | | 625492 | | | |
| 2.82 | 0.111 | | | | | | | | | |
| 2.95 | 0.116 | 620575 | | | | | | | | |
| 3.00 | 0.118 | | | | | | | 624480 | | |
| 3.05 | 0.120 | | | | | | | | | |
| 3.10 | 0.122 | | | | | | | | | |
| 3.18 | 0.125 | | 622722 | | | | 626058 | 626151 | | |
| 3.28 | 0.129 | | | | | | | | | |
| 3.30 | 0.130 | | | | | | | | | |
| 3.35 | 0.132 | | | | | | 625543 | | | |
| 3.45 | 0.136 | | | | | | | | | |
| 3.56 | 0.140 | | 622114 | | | | | | | |
| 3.78 | 0.149 | 623712 | | | | | | | | |
| 3.96 | 0.156 | | | | | | | | | |
| 4.06 | 0.160 | | | 621666 | | | | | | |
| 4.22 | 0.166 | | | | | | | | | |
| 4.57 | 0.180 | | 624362 | | | | | | | |
| 4.78 | 0.188 | | | | 623224 | | | | | |
| 5.00 | 0.197 | | | | | | | | | 624501 |
| 5.16 | 0.203 | | | | | | | | | |
| 5.61 | 0.221 | | | | | | | | | |
| 5.84 | 0.230 | | | | | | | | | 625981 |
| 6.35 | 0.250 | | | | | | | | | 625068 |
| 7.92 | 0.312 | | | | | | | | | |

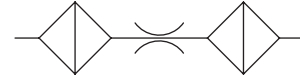
*Contact factory for additional orifice sizes.

P106 018E

OPERATION

Install in manifold to restrict fluid flow.

Schematic



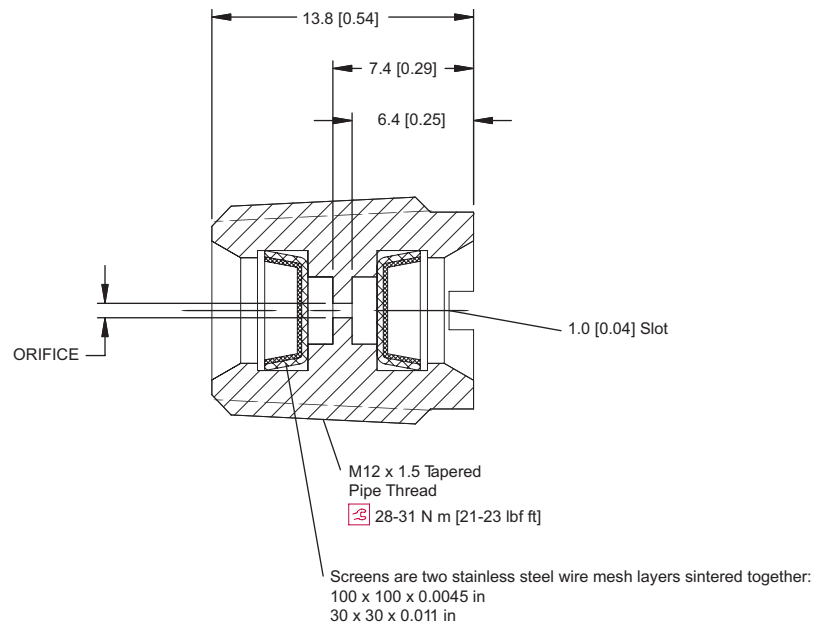
P106 021E

PERFORMANCE

Refer to Orifice plug sizing chart on page 18.28

DIMENSIONS

mm [in]



P106 019E

ORDERING INFORMATION

| Orifice Diameter | | Orifice Plug Part Number |
|------------------|-------|--------------------------|
| mm | [in] | |
| 0.38 | 0.015 | 923231 |
| 0.43 | 0.017 | 923038 |
| 0.46 | 0.018 | 923239 |
| 0.51 | 0.020 | 923061 |
| 0.64 | 0.025 | 923053 |
| 1.19 | 0.047 | 11070992 |
| 1.91 | 0.075 | 923186 |
| 3.56 | 0.140 | 923112 |

P106 020E